

# A Lipid Rafts Theory of Alzheimer's Disease

Ari Rappoport  
The Hebrew University of Jerusalem  
ari.rappoport@mail.huji.ac.il

November 2020  
Summer 2023

**Abstract.** I present a theory of Alzheimer's Disease (AD) that explains its symptoms, pathology, and risk factors. To do this, I introduce a new theory of brain plasticity that elucidates the physiological roles of AD-related agents. New events generate synaptic and branching candidates competing for long-term enhancement. Competition resolution crucially depends on the formation of membrane lipid rafts, which requires astrocyte-produced cholesterol. Sporadic AD is caused by impaired formation of plasma membrane lipid rafts, which prevents the conversion of short- to long-term memory, and yields excessive tau phosphorylation, intracellular cholesterol accumulation, synaptic dysfunction, and neurodegeneration. Amyloid beta (Abeta) production is promoted by cholesterol during the switch to competition resolution, and cholesterol accumulation stimulates chronic Abeta production, secretion, and aggregation. The theory addresses all of the major established facts known about the disease, and is supported by strong evidence.

**Keywords.** Alzheimer's disease (AD), adaptive response plasticity (ARP), double-edged plasticity (DEP), short-term memory, cholesterol, lipid rafts, amyloid beta.

## 1 Introduction

Alzheimer's Disease (AD) is the main type of dementia, affecting dozens of millions of people.<sup>1</sup> Despite extensive research (220K papers in Pubmed, 2.5M in Google Scholar) and many hypotheses,<sup>2</sup> there is at present no coherent theory of AD. The dominant account is the amyloid beta (Abeta) hypothesis, but it is not a complete theory and it is widely criticized.<sup>3</sup>

The minimal requirement from any theory of AD is to explain the following major facts. The main AD symptom is memory impairment, starting with anterograde memory and progressing to retrograde memory. Other cognitive deficits are also present.<sup>1</sup> Olfaction and hearing problems occur very early, as are retinal abnormalities.<sup>4</sup> There are two disease variants, sporadic and autosomal dominant (familial (FAD)), with the sporadic variant appearing only in relatively old age. The defining AD pathologies are intracellular neurofibrillary tangles (NFTs) associated with hyper phosphorylated tau (hyper p-tau), and extracellular plaques containing Abeta.<sup>1</sup> Tau pathology shows good spatial and temporal correlation with symptoms,<sup>5</sup> but plaques are also commonly present in non-demented people in aging, and not all demented people exhibit them.<sup>3</sup> Several basic cellular components show dysfunctions that often precede NFTs and plaques, including in mitochondria and lipid (especially cholesterol) and calcium homeostasis.<sup>6</sup> AD involves early synaptic damage and loss, followed by severe neurodegeneration.<sup>7</sup> Carrying the apolipoprotein ApoE4 isoform is strongly associated with AD, while ApoE2 is almost completely protective. There are other risk factors (female sex, viral infection, brain injury, insulin resistance, inflammation, damaged brain blood vessels, stress), and protective factors (education). Obesity and being underweight increase risk, but being overweight is protective.

This paper presents a new theory of AD, the **lipid rafts theory of AD (LRAD)**, that explains all of these facts. To do so, it first presents a new theory of brain plasticity, **adaptive response plasticity (ARP)**, which explains how neural activity yields memory formation and the physiological roles of the main AD agents. The focus on plasticity is motivated by the fact that initial memory symptoms involve anterograde amnesia of benign everyday events.<sup>1</sup> This points to an early impairment in normal memory formation processes, i.e., in brain plasticity. Current descriptions of brain plasticity are incomplete and do not address AD agents, prompting the development of a new theory.

ARP and LRAD address the major established facts known about brain plasticity and AD, methodically identified via a thorough examination of the scientific literature (hundreds of thousands of papers) done over more than ten years. Both theories are supported by very strong evidence.

**Overview of adaptive response plasticity (ARP).** In ARP, the organism can be in one of three states (Figures 1-3). The **steady state** of neurons, their interconnections (synapses), and glia is supported by stable receptors and channels, the cytoskeleton, adhesion and scaffolding molecules, trans-synaptic nanodomains, extracellular matrix (ECM), myelin, and various constitutively active enzymes. Novelty-induced neural activity initiates a plasticity process comprising two stages. First, a **candidate generation (Cgen)** stage involves the formation of elements competing for long-term enhancement. Candidates include existing synapses, new synapses, new neurite branches, and (sometimes) new neurons. This stage involves destabilization of the steady state, immediate potentiation of neurotransmission, and structural changes, and is what underlies short-term memory (STM) (Figure 1). Second, **competition resolution (Cres)** comprises the enhancement of winners, elimination of losers, and restabilization (Figure

2). Winner enhancement starts early, but involves a relatively long process in which the evoked changes undergo consolidation to establish a new steady state (Figure 3).

Crucially, the switch from Cgen to Cres depends on the formation of plasma membrane (PM) **lipid rafts (LRs)**, ordered lipid nanodomains enriched in cholesterol, sphingomyelin, and phospholipids, which are essential for connecting the membrane to the cytoskeleton, the ECM, and synaptic partners, and hence for receptor trafficking and signaling, winner enhancement, and stabilization. The role of tau is to promote cytoskeleton growth and stability in winning synapses. It is activated in a PM LR-dependent manner via dephosphorylation during early winner enhancement, and inactivated during Cgen and loser removal. The role of amyloid precursor protein (APP) is to manage cholesterol during plasticity. APP has two mutually exclusive cleavage products, **soluble APP alpha (sAPPa)** and Abeta. sAPPa is a major Cgen agent promoting cholesterol synthesis and transport. The incorporation of sufficient amounts of cholesterol in LR triggers the production of Abeta, which terminates Cgen and removes losing candidates.

**Overview of lipid rafts theory of AD (LRAD).** Once plasticity at health is understood, we can see what goes wrong in AD. LRAD provides a complete mechanistic account of AD symptoms, pathology, and risk factors. The central thesis is that AD is caused by impaired formation of plasma membrane LR, mainly due to insufficient neural uptake of cholesterol, which is normally produced by astrocytes and transported to neurons via ApoE.

Reduced formation of PM LR prolongs Cgen and prevents Cres (Figure 4), with three major consequences. First, short-term memory is not converted to long-term memory, explaining AD anterograde amnesia. Second, the cytoskeleton is not linked to the membrane properly, leading to excessive tau phosphorylation, mitochondria issues, impairment in all signaling triggered by plasma membrane receptors (including growth factor signaling), and eventual neurodegeneration. Tau phosphorylation is a direct consequence of the core mechanism of the disease, explaining the correlation between tau pathology and symptom severity.

A third consequence of impaired plasma membrane LR is increased cholesterol production by neurons. In many cases, this does not suffice for PM LR and stimulates chronic Abeta production, leading to membrane Abeta cation channels that induce calcium toxicity and to Abeta aggregation. In other cases, neural cholesterol production does manage to establish PM LR, with intact plasticity accompanied by excessive Abeta. This explains why Abeta plaques are only weakly associated with AD symptoms and why cognitively healthy people can exhibit them. They are neither causal nor essential for the disease.

Neurodegeneration is exacerbated by the fact that many plasticity agents obey a **double-edged plasticity (DEP)** principle, whereby an agent can support both Cgen and Cres, depending on amounts or cleavages. Crucially,  $\text{Ca}^{2+}$  is a DEP agent, with high  $\text{Ca}^{2+}$  marking winners and low  $\text{Ca}^{2+}$  inducing loser elimination. Since the LR impairment leads to chronic plasticity processes that involve relatively small calcium amounts, AD involves chronic loser elimination processes that yield degeneration.

Impaired formation of PM LRs can stem from several causes. In general, it occurs due to accumulation of risk factors, the strongest of which being aging. Other risk factors include ApoE4, infection by viruses that target LRs, brain insulin resistance (which impairs cholesterol synthesis), damaged brain vasculature, brain injury, stress, and chronic neuroinflammation.

The following sections detail ARP, LRAD, evidence for LRAD, and AD risk factors.

## 2 Theory of Adaptive Response Plasticity (ARP)

Brain responses with any element of novelty trigger plasticity processes that alter the paths involved in response execution, to facilitate the activation of this response in similar future situations. Plasticity can modify, create or remove synapses, neurite branches, neurons, glia, and glia processes. The fundamental plasticity task is to identify or create the existing or new elements to be modified, perform the modification, and integrate the changes into the existing network. Adaptive response plasticity (ARP) explains how this is done.

During the stable **steady state**, the brain uses a variety of mechanisms to achieve execution efficiency via structural and molecular stability. When plasticity is required, a two-stage process is initiated. The first stage, **candidate generation (Cgen)**, involves destabilization of the steady state to allow modifications, and generation of potential elements to be modified. These include synapses to be potentiated, new neurite branches, new boutons and spines, and new neurons. Candidates are generated in all areas in which there is novelty-related execution, as indicated by high calcium influx. A single neuron normally contains many synapse candidates, to provide a variety of options for optimal plasticity. The changes done at this stage promote high calcium influx, via membrane insertion of calcium-permeable (CP) receptors.

Candidates compete for long-term persistence, the winners being those who have managed to gain sustained support from intracellular calcium. Competition is race-like, not direct, although candidates do compete indirectly over limited cellular resources.

In the second stage, **competition resolution (Cres)**, winning candidates are enhanced, losing ones are eliminated, and the relevant structures are stabilized. Winner enhancement optimizes neurotransmission in terms of time and energy by creating spatially and temporally focused signaling, and by replacing the CP receptors added during Cgen by receptors that allow less or no calcium. Winning spines are structurally supported via the formation of an actin cytoskeleton, which requires tau-mediated connectivity to the main cytoskeleton MTBs, and the formation of trans-synaptic nanodomains. Losing spines and branches are retracted and removed, with appropriate modifications to the cytoskeleton. There is a relatively long consolidation process, much of it occurring during sleep, that involves protein synthesis to re-establish membranes, cytoskeletons, and the ECM.

There is overwhelming evidence that neural activity changes neurotransmission and induces new synapses, dendritic spines, axonal boutons, branching points, and (at least sometimes)

neurons, that the neurons and neurites connected by new synapses participate in the inducing responses, that these changes undergo stabilization and consolidation, and that this process underlies memory.<sup>8</sup> There is also strong direct evidence for inter-spine competition.<sup>9</sup> Further evidence is given below.

The switch from Cgen to Cres is triggered by the formation of plasma membrane LRs, which are essential for connecting the membrane to the cytoskeleton, the ECM, and synaptic partners, and thus for trafficking and anchoring of receptors and scaffold proteins to winning candidates and for linking presynaptic and postsynaptic cells. The weakest element in LR formation is cholesterol, because it is produced by astrocytes and transported to neurons. Unlike other astrocyte-produced agents (e.g., glutamine, lactate), cholesterol has a large hydrophobic domain and its transport requires relatively heavy machinery (ApoE). APP is a central plasticity protein whose major physiological role is to manage cholesterol during plasticity, with sAPPa promoting its synthesis and Abeta terminating it.

ARP is a general theory in which plasticity consists of a single well-defined process evoked in all plasticity-inducing contexts, including neonatal development, adult learning, and after injury. It also operates in the same manner across all body tissues. These aspects will not be detailed here due to our brain and AD focus.

**Double-edged plasticity (DEP).** The brain doesn't know in advance which candidates would win and which would lose, so both winners and losers are stimulated by the same agents. To distinguish between winners and losers, biology utilizes a mechanism that I call **double-edged plasticity (DEP)**. In DEP, different agent amounts, rates, or cleavages can induce opposite effects. To induce amount-dependent effects, the agent binds different receptors or domains with different affinities. Usually, winners and losers utilize low and high affinities (high and low amounts), respectively. Brain agents are chemical and propagate in media, so only a focused execution path enjoys high amounts, defining where winners are located.

Many important agents directly obey DEP. Calcium activates CaMKII/PP2B, promoting Cgen/Cres (see below). Dopamine has two receptor families, the low affinity D1R family that supports vigorous activity (via GPCR Gs and Gq) and the high affinity D2R family that opposes it (via Gi/o).<sup>10</sup> Similarly, high/low affinity serotonin 5-HT<sub>1</sub>/5-HT<sub>2</sub> receptors suppress/promote effortful activity.<sup>11</sup>

Another mechanism that supports DEP is different cleavages of a protein. To induce cleavage effects, the pre-cleavage and various post-cleavage agents activate different signaling paths. This is the case with APP (see below) and growth factors (BDNF, NGF), whose mature forms support candidate and winner growth while their preforms support loser removal (see below).

**LTP, LTD.** The notions of long-term potentiation (LTP) and long-term depression (LTD), which are ubiquitously used in relation to plasticity, are not used in ARP. LTP occurs in both Cgen (all over) and Cres (in winners), and LTD occurs in Cres in both winners and losers. These terms are suitable for describing the local effects of specific experimental conditions, not for the

high-level theory.

The following sections detail the steady state, Cgen, cholesterol and LRs, and Cres, with an emphasis on the ARP aspects that are most relevant to AD.

## 2.1 The steady state

The main relevant components of the steady state are the cytoskeleton, adhesion and scaffold proteins, the ECM, myelin, and constitutive activity.

**Cytoskeleton.** The cytoskeleton supports intracellular trafficking, including of mitochondria and growth factors, exocytosis and endocytosis, and is crucial for neurotransmission and plasticity.<sup>12</sup> It has three main ingredients, microtubules (MTBs), located mainly in axons but also in dendritic spines, intermediate filaments, and F-actin, located in spines. MTB and actin stability are mainly supported by Map1b and cofilin, respectively. Tau is discussed below.

**Adhesion.** A variety of synaptic adhesion proteins (e.g., neuroligin/neurexin, LRRTM) connect pre- and postsynaptic sites to improve physical stability and signaling.<sup>13</sup> An important role of these proteins is to establish trans-synaptic nanocolumns and cytoskeleton-connected synaptic **nanodomains** that restrict the spatial propagation of neurotransmitters to provide rapid and efficient activation of downstream signaling.<sup>13</sup> Stable localization of receptors at the plasma membrane is assisted by scaffold proteins such as PSD95 and GRIP1.<sup>14</sup>

**Extracellular matrix (ECM).** The brain's ECM is mainly arranged in perineuronal nets and perinodal ECM.<sup>15</sup> It is synthesized following neural activity and provides stability. It closes the critical period of plasticity during development, opposes the lateral diffusion of some synaptic proteins to extrasynaptic sites, and augments synaptic adhesion.<sup>15</sup> Integrins are a family of cell surface ECM adhesion molecules that support cytoskeleton-based bidirectional trafficking.<sup>16</sup> Thus, the steady state includes a global skeleton that connects all cells to each other via cytoskeletons, adhesion molecules, and ECM.

**Myelin.** Oligodendrocyte (OLG) processes enwrap neural axons in a myelin sheath mainly made of OLG-produced cholesterol. Myelin protects axons and improves neurotransmission.

**Constitutive activity.** There are many proteins showing constitutive activity to support the steady state. In our context, the main ones are CaMKII, PKMz, and GSK3b (see below).

## 2.2 Candidate generation (Cgen)

Cgen is triggered in acute states involving PKA activation and strong  $\text{Ca}^{2+}$  influx, depolarizing the cell and inducing action potentials. This is rapidly followed by the release of the growth factor proforms proBDNF and proNGF<sup>17</sup> (both pre- and post-synaptic), tissue plasminogen activator (tPA), which cleaves proforms to the mature forms BDNF and NGF,<sup>18</sup> and MMP9,

which digests ECM and adhesion molecules.<sup>19</sup> Cell detachment from the ECM activates integrin signaling and yields the endocytosis of LR components such as caveolin1, destabilizing the steady state.<sup>16</sup>

PKA, MARK2 and high  $\text{Ca}^{2+}$ -activated CaMKII phosphorylate tau at S262, S356 and S214, and ERK phosphorylates tau at S199/S202.<sup>20</sup> Phosphorylation of tau inactivates it to destabilize the existing MTB-actin cytoskeleton and is essential for neurite formation. ERK also destabilizes myelin.<sup>21</sup> Thus, Cgen destabilizes both extracellular and intracellular stabilization mechanisms.

A central ARP tenet is that Cgen is a cholesterol deficient state. In support, statins, which decrease cholesterol synthesis, increase tPA and p11 (another agent that facilitates growth factor maturation) expression and BDNF maturation activity,<sup>22</sup> and cholesterol deficiency induces hyper p-tau, axonal degeneration, and MTB depolymerization (breakdown).<sup>23</sup> NGF is a plasticity agent supporting winners. It cooperates with the Akt axis (see below) to promote cholesterol synthesis and rapid axonal growth.<sup>24</sup>

Silent synapses contain NMDARs (mainly GluN2B) but not AMPARs.<sup>25</sup> BDNF acts via TrkB and enhances GluN2B currents to promote neurite branching<sup>26</sup> and AMPARs (mainly the GluA1 subunit) trafficking to silent synapses, unsilencing them.<sup>25</sup> These unsilenced synapses are branching candidates. CaMKII binding to GluN2B is needed for spinogenesis.<sup>27</sup> Wnt protein, which promotes growth during development, also promotes axonal branching during Cgen.<sup>28</sup>

GluA2-lacking AMPARs are calcium permeable. CP-AMPA receptors are located at extrasynaptic or synaptic sites, and mark synaptic candidates. During Cgen, PKA and CaMKII stimulate GluA1 surface expression via phosphorylation at S845 and S831,<sup>29</sup> with ERK promoting GluA1 trafficking to synapses.<sup>30</sup> Existing synapses are not degraded, but are established via the digestion of adhesion molecules, and their excitatory currents are enhanced by switching AMPARs to be CP via GluA2 endocytosis promoted by PKC phosphorylation at S880.<sup>31</sup>

Most PKC isoforms are activated by calcium. In addition to GluA2 endocytosis, PKC promotes membrane incorporation of GluA1 via pS181,<sup>32</sup> and activation of the Rho GTPase Rac1, which promotes spinogenesis via the actin cytoskeleton.<sup>33</sup>

Reelin is an agent promoting neural migration and growth during development, after which its expression diminishes. In the adult brain, it is expressed by excitatory neurons in entorhinal cortex (ETRC) layer 2 projecting to the hippocampus, GABAergic neurons in cortical layers 1/2, and retrosplenial cortex-projecting GABAergic hippocampus neurons.<sup>34</sup> All of these neurons have axons in long-distance pathways. Reelin is a Cgen agent promoting APP alpha cleavage<sup>35</sup> and neurite branching.<sup>36</sup> In ARP, its role is to promote integration of new neurons and events into the network.

**APP, sAPPa.** Amyloid precursor protein (APP) is a transmembrane protein cleaved by alpha-secretase to yield soluble APPa (sAPPa), with the remaining part later cleaved by gamma-secretase, or by beta-secretase (BACE1) followed by gamma-secretase to generate Abeta. De-

spite extensive research on Abeta and APP,<sup>37</sup> to my knowledge there is no coherent account of their physiological roles. ARP provides such an account, where sAPPa and Abeta are Cgen and Cres agents, respectively. A specific role of APP is to manage cholesterol, with sAPPa promoting its synthesis and transport, and Abeta terminating its synthesis and promoting extrusion.

APP transcription is mainly promoted by Cgen agents, including BDNF<sup>38</sup> and ERK.<sup>39</sup> Alpha cleavage (i.e., sAPPa production) is promoted by Cgen agents, including BDNF,<sup>40</sup> NGF,<sup>41</sup> tPA,<sup>42</sup> MMP9,<sup>43</sup> and PKC.<sup>44</sup> Supporting the ARP thesis that Cgen is a state in which membrane cholesterol is needed, alpha cleavage is stimulated by reduced membrane cholesterol,<sup>45</sup> and occurs in non-LR domains.<sup>46</sup> sAPPa promotes cholesterol synthesis. The intracellular part created by alpha cleavage increases SREBP2, the main agent inducing cholesterol synthesis, in cells with low cholesterol, including human astrocytes.<sup>47</sup> sAPPa directly binds to and activates insulin receptors,<sup>48</sup> which activate SREBP2 via the PI3K/Akt/mTOR axis and increase alpha-secretase expression.<sup>49</sup>

sAPPa is a major Cgen agent. It rapidly increases surface extrasynaptic GluA1, decreases GluA2/GluA3 and de novo GluA2 synthesis,<sup>50</sup> and promotes neurite growth, branching, spine density, and spine volume.<sup>51</sup> It is an adhesion molecule that promotes axonal outgrowth and synaptogenesis.<sup>52</sup>

Cgen directly opposes Cres by suppressing BACE1 via several Cgen agents including sAPPa,<sup>53</sup> NGF, TrkA,<sup>43</sup> and BDNF (via SORLA).<sup>54</sup> Cgen does not end until winners can stably grow, which requires plasma membrane lipid rafts.

**Short-term memory (STM).** Cgen plasticity is what supports STM. In particular, it has been repeatedly shown that GluA1 is essential for STM, with knockout animals showing normal spatial reference memory but markedly impaired spatial working memory and STM.<sup>55</sup>

## 2.3 Cholesterol, ApoE, lipid rafts

Cgen is a cholesterol-deficient state, and the incorporation of cholesterol in LRs switches plasticity to Cres. Cholesterol is a vital element in all body tissues.<sup>56</sup> The brain is the most cholesterol-rich organ, containing over 20 % of body cholesterol. Cholesterol is a major ingredient of LRs and myelin. It is also the precursor of steroids, which are major plasticity agents. Cholesterol does not cross the blood-brain barrier. Brain cholesterol is produced in astrocytes, transported to neurons in **apolipoprotein E (ApoE)** particles, and uptaken via ApoE receptors (mainly LDL and LRP1). ApoE transcription is promoted in growth situations via growth factors (BDNF, NGF) and estrogen.<sup>57–59</sup> It is normally produced by neurons only in small amounts, with production increasing in stress, injury and deficiency conditions.<sup>60</sup>

Cholesterol synthesis is mainly stimulated by SREBP transcription factors,<sup>61</sup> which also promote LDLR. SREBPs are activated by lack of plasma membrane cholesterol, and by ERK and insulin/Akt (see above). The brain-specific cholesterol metabolite 24SHC (and its non-brain oxysterol counterpart 27HC), and intracellular cholesterol excess, suppress SREBP and activate



nuclear LXRs, which promote ApoE and the transporters ABCA1 and ABCG1. These extrude cholesterol by lipidating ApoE and transporting it across the membrane.

**ApoE isoforms.** Humans have three ApoE isoforms that differ in produced amounts and transport capacity, with a ranking of ApoE2 > ApoE3 > ApoE4.<sup>62</sup> ApoE4 has the highest receptor affinity, saturating receptors faster. These properties can have both positive and negative consequences. ApoE4 is more efficient in terms of speed and resources, explaining its various positive effects (e.g., improving cognition at youth<sup>63</sup>). However, the fact that neurons of ApoE4 carriers receive less cholesterol makes them vulnerable in aging, as discussed here.

**Lipid rafts.** LR are dynamic membrane nanodomains enriched in cholesterol, sphingolipids, mainly sphingomyelin (SPM), and glycerophospholipids such as gangliosides.<sup>64</sup> LR were controversial until some time ago due to technical difficulties, but are now fully consensual. LR increase local membrane rigidity, and serve for anchoring proteins and for linking the membrane to the cytoskeleton and the ECM, thereby supporting the link between the intracellular and extracellular environments, in particular extracellular-induced signaling.<sup>16,65</sup> They are a major membrane protein site, and are central cytoskeleton trafficking targets, interfacing with the actin cytoskeleton.<sup>64</sup> MTB proteins, mainly tau, associate with LR, and impairing this association yields axonal retraction.<sup>65,66</sup>

Palmitoylation targets proteins to LR and is required for stable membrane anchoring of many proteins, including synaptic density proteins, glutamate receptors and their recycling proteins, steroid receptors, GPCRs, and actin regulating proteins required for spine growth.<sup>67</sup> Caveolae are LR that contain caveolin1 and show as membrane invaginations. They are essential for membrane anchoring and trafficking of tyrosine kinase receptors such as TrkA (NGF) and the insulin receptor.<sup>68</sup> LR and cholesterol are essential for the activation of nicotinic receptors.<sup>69</sup>

LR are essential for plasticity. Synaptogenesis requires astrocyte-derived cholesterol in ApoE.<sup>70</sup> Depletion of cholesterol or sphingolipids leads to gradual loss of hippocampus dendritic spines and synapses and to surface AMPAR instability.<sup>71</sup> Cholesterol depletion blocks winner enhancement in hippocampus CA1,<sup>72</sup> an area that shows specific vulnerability in AD (see below).

LR are present in intracellular membranes as well, including in mitochondria-associated endoplasmic reticulum membranes (MAMs), which are essential for mitochondria function,<sup>73</sup> and in the trans-Golgi network and recycling endosomes.<sup>74</sup>

## 2.4 Competition resolution: winners, losers

Cgen induces indiscriminate destabilization, candidate generation, and cellular calcium influx in the vicinity of activity sites. Cholesterol induces a switch from Cgen to Cres, in two ways. It allows winner enhancement through LR, and it stimulates the production of Abeta, which is the main loser removal agent.

Cres has four main components. First, calcium influx is reduced, in both winners and losers. Calcium entry must be restrained because it can be toxic to cells. Most relevant here, calcium activates calmodulin, whose continued binding to PSD95 rapidly (within 15 minutes) decreases its palmitoylation and synaptic location and increases AMPAR endocytosis, rendering synapses unusable.<sup>75</sup> Note that this time frame accords with the duration of short-term memory. Calcium is restrained by switching GluN2B to GluN2A,<sup>76</sup> replacing CP-AMPARs by CI-AMPARs by adding GluA2,<sup>77</sup> and endocytosis of GluA1 via PP2B.<sup>78</sup>

Second, the cytoskeleton is linked to winners to support trafficking, with tau being a major player (see below). Third, winning synapses are stabilized, including the formation of nanodomains for efficient neurotransmission.<sup>79</sup> Finally, the membrane is returned to a stable condition by removing losing candidates (see Abeta below).

**Winner determination.**  $\text{Ca}^{2+}$  is a DEP agent, with high amounts (or rates) activating kinases (mainly CaMKII) that promote winners, and small amounts activating phosphatases (mainly PP2B) to eliminate losers.<sup>80</sup> It is not possible to restrain calcium before some persistent enhancement to winners, because strong, focused, persistent calcium is what determines winner status. Once LR is incorporated into the plasma membrane, Cres can enhance winning candidates and remove losing ones to establish a new steady state.

There are two main agents involved in winner enhancement, CaMKII and PKC. Both start their activity during Cgen (because winners obviously need to be generated first) and continue during Cres.

As noted above, CaMKII is activated by high calcium<sup>27</sup> during Cgen. It binds GluN2B, translocates with it to synapses, and promotes GluA1 channel conductance via phosphorylation at S831.<sup>27</sup> It induces spine growth via Rac1.<sup>81</sup> When Cres starts, CaMKII undergoes autophosphorylation at T286, which allows it to continue activation without calcium. This way, it can support Cres to consolidation and possibly even synapse maintenance at the steady state. It promotes synapse stabilization and nanodomains via segregation of AMPARs and NLG from GluN2B,<sup>79</sup> and the switch from GluN2B to GluN2A.<sup>76</sup>

PKC is activated by sustained calcium from intracellular stores. During Cgen, it promotes GluA1 synaptic delivery via S818 phosphorylation,<sup>32</sup> structural growth via Rac1,<sup>33</sup> production of sAPPa over abeta,<sup>44</sup> and GluA2 endocytosis.<sup>14</sup> During Cres, it promotes the switch from GluN2B to GluN2A,<sup>76</sup> and prevents winner damage due to Abeta (endocytosed APP undergoes beta cleavage, unless this is opposed by PKC). At plasticity termination, its constitutively active form PKMz supports long-term memory.<sup>82</sup>

Candidates that become large enough allow the invasion of MTBs and tau,<sup>83</sup> an important factor in winner determination.

**Tau.** Tau binds cytoskeleton MTBs and was initially thought to support MTB stability. However, its detachment from MTBs does not destabilize them or impair axonal transport.<sup>84</sup> It is now viewed as a cross-linker of the MTB and actin cytoskeletons that promotes dynamic changes

including axonal elongation, synapse formation, and stabilization of growing neurites.<sup>85</sup>

During Cgen, tau is inactivated via phosphorylation (see above) to oppose its stabilization effect. During Cres, it is activated in winners to promote their structural stabilization and cytoskeleton linking, and inactivated in losers to allow their removal. Activation in winners is done by phosphatases, mainly PP2A.<sup>86</sup> Methylated (stronger) PP2A is enriched in LRs and decreases p-tau.<sup>87</sup> Inactivation in losers is mainly done by GSK3b and Cdk5, assisted by p75.<sup>88</sup>

As noted above, active tau requires LRs to achieve its effects.<sup>65,66</sup> Reducing cholesterol (which induces a loser-like, non-LR state) yields hyper phosphorylation of tau at the GSK3 and PKA sites.<sup>89</sup> Excess tau is secreted via direct translocation through the plasma membrane, and this action is supported by cholesterol and SPM.<sup>90</sup> Thus, extracellular tau is a normal by-product of plasticity-inducing activity.

**Abeta.** Abeta is a major Cres agent whose main role is to remove losers. The switch from alpha to beta cleavage of APP, and thus initiation of Abeta production, occur when LRs have been formed. Cholesterol clearly stimulates Abeta production and is needed for it, its depletion inhibiting BACE1 and gamma secretase additively.<sup>91,92</sup> In turn, Abeta induces negative feedback on cholesterol synthesis,<sup>93</sup> supporting the ARP view that cholesterol synthesis occurs in Cgen but not Cres.

BACE1 operates in intracellular compartments (endosomes, Golgi), so Abeta can be produced without the formation of plasma membrane LRs<sup>94</sup> (as we will see below, this has important implications in AD). Plasma membrane LRs are a feature of winners, while the main role of Abeta is to remove losers, which are spatially segregated from winners.

Abeta production is also promoted by the Cres agents p75 and JNK.<sup>95,96</sup> Abeta promotes Cres by enhancing GSK3beta,<sup>48,88</sup> PP2B,<sup>78,97</sup> proNGF,<sup>98</sup> p75,<sup>88</sup> PTEN,<sup>99</sup> JNK,<sup>96</sup> and RhoA (which opposes Rac1).<sup>100</sup> Abeta's loser removal functionality is obtained via three main mechanisms, RhoA, p-tau (via GSK3b, JNK) and p75, which is a high-affinity receptor for proBDNF and proNGF and a low-affinity receptor for NGF. p75 stops neurite growth and induces apoptosis,<sup>26</sup> and, with Abeta, activates sphingomyelinase to remove SPM from the plasma membrane,<sup>93</sup> thereby cleaning losing candidates from LR components and restoring membrane integrity.

Abeta opposes Cgen through these agents (e.g., GSK3beta opposes Akt and thus insulin signaling, PP2B opposes BDNF, PTEN opposes mTOR) and other mechanisms (e.g., it opposes NGF<sup>48</sup> and nAChRs, mainly the calcium-permeable alpha7<sup>101</sup>).

The ECM, which promotes the stable post-plasticity state, contains several agents (e.g., HSPG) that are contained in LRs and bind and uptake Abeta.<sup>102</sup>

Abeta is a DEP agent, possibly to prevent it from impairing winners. Abeta oligomers readily insert in membranes to form cation-selective pores.<sup>101,103</sup> In low (picomolar) concentrations, the resulting calcium influx promotes the function of alpha7nAChRs,<sup>101</sup> explaining the positive effect that low Abeta can have on LTP and growth.<sup>104</sup> In higher (nanomolar) concentrations, Abeta inhibits nAChRs and decreases plasticity.<sup>101,104</sup>

In summary, Abeta terminates Cgen, promotes Cres, especially loser removal, and terminates cholesterol synthesis. The common view of Abeta as a negative agent stems from the fact that loser removal involves reduced spine density and LTD. However, loser removal is essential for cellular health, and Abeta has a crucial healthy role in plasticity. Indeed, Abeta disruption prevents the consolidation and stabilization of memory.<sup>105</sup>

**Consolidation.** This stage takes place after activity has terminated, and involves synthesis of proteins and their trafficking to the winning candidates, completion of loser removal, cytoskeleton stabilization, ECM and myelin production, and other actions needed to establish a stable steady state. Consolidation is one of the major processes taking place during sleep.<sup>106</sup>

**Summary.** Brain plasticity starts with destabilization of the stable state, coupled with indiscriminate increase of neural excitability and generation of structural candidates competing for enhancement. Winners are determined by sustained calcium signaling. Incorporation of cholesterol in plasma membrane lipid rafts triggers a switch to restabilization, which involves winner enhancement and loser removal. The major agents in these processes are the central AD agents tau, APP, and cholesterol (with other lipids). sAPPa promotes the initial candidate generation stage. Cholesterol induces a switch to the production of Abeta, which promotes loser removal. The formation of plasma membrane LRs allows activated tau to extend the cytoskeleton and link it to the enhanced winning synapses. Both Abeta and tau phosphorylation are crucial for normal, healthy plasticity.

### 3 Lipid Rafts Theory of AD (LRAD)

Now that we have a theory of brain plasticity that explains the roles of the main AD agents, it is not difficult to understand what goes wrong in AD. This section presents the LRs theory of AD (LRAD) and shows how it accounts for AD symptoms and pathology. Risk factors, protective factors, and strong evidence supporting the theory are given in subsequent sections. Unless explicitly noted, the discussion is about sporadic AD, not FAD.

**Mechanisms underlying symptoms and pathology.** Our starting point for explaining AD are the following three clues. First, the strongest genetic risk factor in AD, the greatly increased risk in ApoE4 carriers, points to reduced transport, neural uptake, or neural trafficking of cholesterol. Second, the characteristic symptom of AD, impaired anterograde memory with functioning short-term memory, points to a problem in the initiation of Cres or in winner enhancement. Third, the main AD pathologies, hyper p-tau and Abeta, point to chronic Cgen or excessive loser removal. Neurodegeneration is a natural consequence of these pathologies and of chronic loser removal.

The main role of cholesterol in short-term plasticity is in LRs. Thus, the first clue leads to the hypothesis of impaired LR formation. Impaired LR formation impairs the switch from STM

to LTM and from Cgen to Cres, explaining memory symptoms (the second clue). LRs and Cres are essential for tau dephosphorylation, explaining the tau part of the third clue (see below for the Abeta part). Neurons can produce cholesterol in stress to support Abeta production, but they cannot supplant astrocyte-derived cholesterol for plasma membrane LRs.<sup>70</sup> Thus, we reach the following account:

- AD symptoms and pathology are caused by impaired formation of plasma membrane lipid rafts, which is in turn caused by reduced neural uptake or trafficking of astrocyte-produced cholesterol.

**Chronicity.** The formation of PM LRs triggers the switch from Cgen to Cres. When it is impaired, we can expect both Cgen and Cres to be active at the same time, but with smaller agent amounts than those involved in healthy plasticity, and with a prolonged duration. This is precisely what is called a **chronic** state (Figure 4). In early disease stages, chronicity should yield an increase in both Cgen and Cres agents. With disease progression, brain resources get depleted, so Cres should increase and Cgen decrease. This is exactly what the evidence shows (see below).

Many plasticity agents obey DEP, and are present in smaller amounts in chronicity. As a result, their effects are tilted towards Cres. Specifically, chronic calcium induces loser removal and neurodegeneration. Thus, the continued activation of Cgen, which could have compensated for cholesterol deficiency by promoting its synthesis, actually exacerbates the situation. Moreover, because biological systems extensively rely on negative feedback, chronicity desensitizes receptors and pathways, impairing many cellular signaling pathways.

**Cholesterol, Abeta.** A straightforward explanation for reduced PM LRs is decreased cholesterol synthesis. Indeed, there is data indicating that ApoE4 is associated with reduced synthesis capacity,<sup>107</sup> and evidence for reduced cholesterol in AD (see below). However, chronic synthesis is at least as likely, since cholesterol synthesis continues as long as it does not get incorporated properly in the plasma membrane. Thus, AD can involve both cholesterol deficiency (in PM LRs) and excess. Chronic synthesis happens in both astrocytes and neurons, which increase cholesterol production under stress. Neural production may be able to counter membrane damage incurred by injury,<sup>60</sup> but it generally does not compensate for cholesterol deficiency during plasticity.<sup>70, 108</sup>

Cholesterol stimulates Abeta production, yielding two types of neurons associated with chronic cholesterol in AD. In the first type, chronic neural cholesterol production eventually manages to form PM LRs. Such neurons form synapses and do not show tau pathology, but they do show excessive Abeta production, causing Abeta secretion and its extracellular aggregation. This explains why Abeta is common in aging, and why Abeta plaques are not strongly correlated with AD symptoms and tau pathology. In the second type, chronic cholesterol production does not compensate for reduced PM LRs, and these neurons show plasticity impairment and

both tau and Abeta pathology. Since Abeta binds cholesterol,<sup>103</sup> in both neural types Abeta plaques are expected to contain cholesterol, as is indeed the case.<sup>109</sup>

**Tau.** LRs are crucial for cytoskeleton-plasma membrane linking, neurite growth, and neurite stabilization, and tau has a major role in these functions.<sup>65,66</sup> LRs promote the switch to Cres and allow tau dephosphorylation in winners. LR impairment promotes the cytosolic localization of tau and p-tau, and tau-membrane disconnect may facilitate the helical tau conformation found in NFTs.<sup>110</sup> Propagating p-tau is hypothesized to spread AD pathology,<sup>5</sup> and tau is indeed secreted as a normal consequence of neural activity<sup>90</sup> (see above). ARP explains this tau secretion as a way of clearing excessive inactive tau generated during Cgen, but it is possible that it occurs in AD, which involves excessive inactive tau as well. Nonetheless, gradual spreading is not well-supported by the evidence.<sup>111</sup>

**Core cause.** The mechanisms of AD can be explained by impaired PM LRs, and these can be explained by reduced uptake of cholesterol or by impaired trafficking to the PM. Why does this happen? Although the link with ApoE4 is very strong, there are people carrying this isoform (even homozygotes) who do not get the disease. In addition, there are ApoE3 carriers with AD.

The parsimonious answer to this question is that cholesterol metabolism, and specifically LRs, are normally reduced in aging<sup>56,83\*</sup>, and a variety of risk factors can push this reduction beyond the damage threshold. Some viruses enter cells via LRs and impair lipid metabolism<sup>†</sup>. Insulin resistance and impaired vasculature impair all plasticity stages and can specifically induce cholesterol deficiency. Sleep problems, chronic inflammation, and chronic stress promote a state similar to chronic destabilization. Brain injury involves acute destabilization that can become chronic. Polyunsaturated fatty acids (PUFAs) are also present in lipid rafts and reduced in aging. These risk factors are expanded upon below. In addition, lipid metabolism is supported by many genes, providing ample opportunity for small gene changes to predispose the person to less efficient metabolism, especially in aging. Such changes can manifest as sporadic AD even in ApoE3 carriers.

Gonadal steroids are major plasticity agents and are also reduced abruptly and relatively early in women (vs. a gradual loss in men), explaining why women have an increased AD risk at younger ages and a faster cognitive decline after diagnosis.<sup>112</sup>

**Autosomal dominant AD.** The core cause of autosomal dominant AD (which approximately overlaps with familial AD) is different from that of sporadic AD, and involves decrease-of-function mutations in the PSEN1 gene, whose protein (presenilin 1) is a major component of gamma-secretase, or mutations in the gamma-secretase APP cleavage site.<sup>113</sup> Such mutations affect both sAPPa and Abeta, which are central plasticity agents. Hence, such mutations can seriously damage plasticity, explaining the earlier age of onset of the disease. The reason that the

---

\*Which incidentally explains why memory is reduced in normal aging.

†This includes COVID-19, which might explain its long-lasting cognitive symptoms.

brain manages to support plasticity until middle age is probably the large functional redundancy between the various Cgen and Cres agents.

## 4 Evidence

In addition to the salient tau, Abeta, and ApoE4 evidence, many other lines of evidence provide support for LRAD, including from LRs, cholesterol, PUFAs, plasticity agents, synapse issues, the brain areas of earliest damage, genetics, and other diseases. These lines of evidence are presented in this section. Risk factors also provide support for the theory and are discussed in the next section.

**Lipid rafts.** LRs are reported to be reduced or abnormal in AD. In mixed ApoE3-ApoE4 carriers, membrane cholesterol was decreased by 36 %, with abnormal LRs.<sup>114</sup> Neuronal LRs are strongly altered in frontal cortex and ETRC from the earliest stages of the disease (before NFTs).<sup>115</sup> The changes include lower cholesterol, SPM, and PUFAs.<sup>115</sup> These neurons show increased sterol esters, which may indicate excessive cholesterol synthesis with impaired incorporation into LRs. Patient temporal cortex contains significantly lower temporal cortex LRs, with the remaining ones depleted of cholesterol.<sup>116</sup> Frontal and temporal cortex LRs contain significantly higher gangliosides GM1/2.<sup>116</sup> Flotillin and gangliosides, strong lipid raft markers, show marked abnormalities in patient brain, CSF and serum.<sup>117–119</sup> In most cases, this also occurs in MCI patients, showing that it is an early event in the disease. Flotillin accumulates in lysosomes in NFT-positive neurons, showing the link between LRs and tau pathology.<sup>120</sup> A recent review summarized strong evidence that Abeta plaques contain cholesterol and gangliosides.<sup>109</sup>

**Cholesterol.** Dysregulated lipid metabolism, especially accumulation in glia, has been noted as a third major AD pathology right from the start, over 100 years ago.<sup>121</sup> Cholesterol and lipid dysregulation is a strong characteristic of AD.<sup>121</sup> As predicted by LRAD, both lower and higher cholesterol are reported. Lower cholesterol is reported in temporal cortex<sup>122</sup> and CSF,<sup>123,124</sup> especially in severe patients.<sup>125</sup> Seladin1, an enzyme that mediates the conversion of desmosterol to cholesterol, is reduced in AD, specifically in vulnerable regions.<sup>126</sup> ETRC and hippocampus show lower cholesterol synthesis, which is significantly associated with AD pathology (however, cholesterol levels themselves were normal, which might indicate chronicity).<sup>127</sup>

Most of the evidence points to chronically increased synthesis. Neurons with NFT tau show higher unesterified cholesterol.<sup>128</sup> Cholesterol and ceramides accumulate in AD brain in a vulnerable region (frontal cortex) but not the cerebellum.<sup>129</sup> ETRC shows elevated cholesterol esters, SPM, and ganglioside GM3.<sup>130</sup> Patients show higher brain cholesterol, decreased LXR (cholesterol extrusion, indicating deficiency).<sup>131</sup> Increased ABCA1 (sterol extrusion) expression highly correlates with dementia severity in AD hippocampus.<sup>132</sup> Cholesterol is increased

in patient astrocyte mitochondria.<sup>133</sup> A sensitive imaging method shows significantly higher (34 %) cholesterol in cortical layers 3 and 4.<sup>134</sup> AD pyramidal neurons in the hippocampus show no nucleus translocation (activation) of SREBP2, indicating sterol excess. 40-50 % of NFT neurons express SREBP2, non-nuclear.<sup>135</sup> Total cholesterol is increased in a CHO cell line with the FAD-causing presenilin1 mutation.<sup>136</sup> CSF levels of cholesterol correlate with p-tau<sup>137</sup> and secreted APP (both alpha and beta)<sup>138</sup> in patients but not controls. PCSK9, which downregulates LDLR and thus ApoE uptake, were reported to be increased in AD, indicating excess. However, no changes have also been reported.<sup>139</sup>

Fibroblasts of sporadic/FAD AD patients show 1.5x higher free cholesterol and cholesterol esters (>2x/>3x).<sup>140</sup> Mitochondria-associated endoplasmic reticulum membranes, which contain LRs, show a higher number of contacts and upregulated function (cholesterol esterification, phospholipid synthesis) in sporadic and FAD fibroblasts and in mouse models.<sup>73</sup> Patient skin fibroblasts show increased cholesterol esterification enzyme and decreased SREBP2, ABCA1 (extrusion) mRNA.<sup>141</sup> In addition to showing cholesterol excess, these results are important because they show that the problem can be present in cells other than glia and neurons, shedding light on the core cause and allowing practical biomarkers.

In many cases, the core of the problem may be lipid trafficking rather than uptake. ApoE4 (and to a lesser degree, ApoE3) tends to aggregate in and damage endosomes,<sup>142</sup> which are crucial for cholesterol homeostasis. Indeed, endosomes are dysregulated in AD, and endosome-related genes such as Bin1, TREM2, PICALM, and SORLA have been highlighted in GWAS.<sup>142</sup>

**PUFAs.** DHA, the main omega 3 PUFA, is reduced in AD serum and post-mortem brain.<sup>143</sup> PUFAs are the main target of lipid peroxidation by reactive oxygen species produced during oxidative stress, and AD brains show higher levels of PUFA oxidation products and oxidative stress (which can stem from chronicity, e.g., of calcium).<sup>143</sup> Although PUFAs are mainly located outside LRs, some are located inside LRs, and PUFA levels are reduced in LRs in frontal cortex and ETRC in AD.<sup>115</sup>

**Plasticity agents.** Virtually all important plasticity agents are dysregulated in AD, including Ca<sup>2+</sup>,<sup>2</sup> ERK, p38, JNK, Akt, PKA, PKC, GSK3beta, PP2B, PP1, PTEN, Cdk5,<sup>144</sup> BDNF, TrkA (the NGF receptor), tPA, MMP9,<sup>145</sup> and PAI-1 (tPA inhibitor).<sup>18</sup> In this list, tau phosphorylation agents (ERK, p38, JNK, GSK3, PP2B, Cdk5, but not PKA) are chronically increased,<sup>144</sup> while PP2A, the main tau dephosphorylation agent, is reduced in AD.<sup>86</sup>

Notably, PKC<sup>144</sup> and GluA2,<sup>146</sup> the hallmarks of winner enhancement and stabilized winners, are reduced in AD. In the hippocampus, the greatest decrease in GluA2 occurs in the most vulnerable areas (subiculum, CA1).<sup>146</sup> Note that PKC is activated by moderate calcium, so chronic calcium (e.g., induced by membrane Abeta cation channels) should have activated it, which would explain reduced GluA2 (PKC promotes its endocytosis, see above). The fact that PKC is reduced and not increased indicates a fundamental non-Abeta problem in winner enhancement processes.



**Synapses.** Synaptic damage is a well-known early event in AD, as recently reviewed.<sup>7</sup> This shows that synapses are not formed correctly or are degraded early. Both accounts support LRAD.

**Brain areas.** The earliest areas that show tau pathology in AD are the ETRC, hippocampus, and LC.<sup>5</sup> Among hippocampus fields, the subiculum and CA1 are much more vulnerable than the DG and CA3.<sup>147</sup> Among thalamic nuclei, the nucleus reuniens, the nucleus that connects the ETRC, subiculum, CA1, and mPFC, is one of the most heavily affected nuclei.<sup>148</sup> ETRC and hippocampus represent scenes and events, which due to their richness present continuous novelty that requires plasticity. The LC, the main norepinephrine (noradrenaline) center in the brain, is also active in all novel situations. The fact that the areas that show the largest plasticity requirements are the most vulnerable in AD supports ARP. Moreover, CA1 and subiculum support familiar scenes, while DG and CA3 support the encoding of new ones.<sup>149</sup> Most of our life experiences involves familiar scenes with some element of novelty, explaining why CA1 and subiculum are relatively more vulnerable. ETRC supports both familiar and novel scenes, explaining its central role in early AD.

Early auditory,<sup>150</sup> olfactory<sup>151</sup> and retinal<sup>152</sup> sensory cells contain LRs, explaining the early loss of hearing and smell and retinal abnormalities in AD.<sup>4</sup> Of note, statin use is associated with sudden hearing loss in an all-Taiwan insurance database,<sup>153</sup> statins are among the drugs that can impair olfaction,<sup>154</sup> and cholesterol depletion causes hearing loss in cats and severe cochlear hair cell loss in mice.<sup>155</sup>

**Genetics.** Cholesterol and lipid pathway genes are repeatedly identified as leading clusters in AD genome-wide association studies (GWAS).<sup>156</sup> So are endosome-related genes, as mentioned above.

**Other diseases.** Niemann-Pick disease type C (NPC), which involves dementia and neurodegeneration, is caused by mutations in the NPC1 or NPC2 genes, which support transport of cholesterol from late endosomes and lysosomes.<sup>157</sup> NPC brains show tau-rich NFTs with paired helical filaments identical to those found in AD.<sup>157</sup>

Down syndrome patients usually carry three copies of the APP gene, and manifest AD-like pathology.<sup>158</sup>

## 5 Risk & Protective Factors

Here I discuss various factors affecting AD. Many of these factors are associated with aging, increasing the aging-related risk.

**Viral infections.** Increased human herpesvirus 6A and 7 were reported in AD,<sup>159</sup> and herpesvirus infection was found to induce a threefold increase in dementia risk.<sup>160</sup> Moreover, in a

highly controlled all-Wales setting, herpes zoster vaccination was shown to decrease dementia (all cause except vascular) risk by 20 %.<sup>161</sup>

In LRAD, viral infection is a direct AD risk factor because many viruses (including herpesvirus and COVID-19) hijack lipid metabolism to persistently weaken lipid homeostasis, especially lipid rafts.<sup>162</sup> Incidentally, this may explain the long-lasting cognitive symptoms of COVID-19.

**Traumatic brain injury (TBI).** TBI can induce a physical disconnect of the ECM, which triggers LR endocytosis.<sup>16</sup> Moreover, it involves strong release and prolonged presence of Cgen agents in the brain,<sup>163</sup> which can induce chronic loser removal due to DEP. Indeed, TBI is an AD risk factor and is associated with synaptic dysfunction.<sup>163</sup>

**Diabetes, obesity.** Type 2 diabetes and obesity are AD risk factors,<sup>1</sup> and the notion that AD is 'type 3 diabetes' is gaining support.<sup>164</sup> In our view, this notion is not justified. LRAD explains this risk factor via the fact that the synthesis of lipids, including cholesterol and PUFAs, needs PI3K/Akt signaling, which is impaired by insulin resistance (IR). Thus, IR can impair LRs and promote chronic cholesterol.

Although IR can exacerbate the situation of people who are at AD risk, brain IR is just one of many risk factors that can yield LR damage, which is the core mechanism in AD. Note that cholesterol homeostasis is more fundamental in AD than IR, since if IR were the core cause it should have affected ApoE2 homozygotes, who are virtually protected. We conclude that IR is definitely a serious AD risk factor and it may even suffice for causing dementia, but the dementia classified as AD requires additional factors.

It should be noted that the association between AD and obesity is not as simple as may seem, since low BMI is also associated with increased risk.<sup>165</sup> This supports LRAD, since low BMI may indicate a tissue-wide problem in lipid synthesis and/or uptake, which can impair LRs.

**Vascular impairment.** Vascular dementia is the 2nd most common dementia after AD, accounting for 5-10 % of the cases, and cerebrovascular disease is commonly shown in AD.<sup>1</sup> Cardiovascular disease is also associated with increased AD risk.<sup>1</sup> Vascular impairment can increase AD risk via reduced raw materials needed for lipid synthesis. However, it can also be a consequence of the AD core mechanism, since impaired cholesterol homeostasis yields vascular damage.

Statins suppress cholesterol synthesis and are regularly taken by people at perceived risk of cardiovascular disease. They do not cross the blood-brain barrier so should not directly affect AD, but they might reduce risk via the other risk factors. They can also be detrimental in AD in case of a damaged barrier.

**Immunity.** Neuroinflammation is common in AD, associated with activation of microglia<sup>1,2</sup> and of their TREM2 receptors.<sup>166</sup> TREM2 is activated by lipids, with mutations that increase AD risk and mutations that decrease TREM2-ApoE binding.<sup>166</sup> Microglia might be activated

by cholesterol excess and have an initial protective role in AD. However, chronic neuroinflammation promotes neurodegeneration.

**Stress.** Early life and life-time stress are associated with earlier AD onset and faster disease progression.<sup>167</sup> This agrees with the fact that chronic stress is associated with neurodegeneration in memory-related areas.<sup>9</sup> The mechanisms of damage of chronic stress may be related to LRs (e.g., cortisol induces endocannabinoid synthesis from PUFAs, which can impair LRs) or be independent of LRs (e.g., calcium excitotoxicity). As a neurosteroid, cortisol requires cholesterol for its synthesis, so chronic cortisol synthesis may promote brain cholesterol depletion.

Oxidative stress and its lipid peroxidation effect are higher in AD, see PUFAs above.

**Smoking.** Smoke exposure and smoking are associated with increased AD risk.<sup>1</sup> This can occur via several mechanisms. For example, nicotinic agonists increase p-tau.<sup>168</sup>

**Education, bilingualism.** Formal education is a clear AD protective factor,<sup>1</sup> and so is (less clearly) bilingualism.<sup>169</sup> LRAD explains these data as follows. Both involve memory-related learning, which creates synapses. A denser synaptic space might reduce the number of candidates, which is a function of novelty. It should facilitate the formation of new synapses, because synapse candidates are closer to each other and are thus easier to connect. Thus, the growth needs of the educated brain are smaller, so smaller amounts of cholesterol are needed for plasticity. Indeed, bilinguals have a larger gray matter volume<sup>170</sup> and increased connectivity.<sup>171</sup>

**Exercise.** Most (but not all) data indicate that exercise weakly reduces AD risk.<sup>172</sup> Exercise has positive effects on many of the risk factors discussed here, including brain vasculature, blood flow, brain clearance from chronic agents, obesity, sleep, and cardiovascular disease.

## 6 Discussion

This paper presented the first complete theory of AD, complete in the sense that it mechanistically explains all of the major AD phenomena, including etiology, symptoms, pathology, and risk factors. To do this, the paper presented a new theory of brain plasticity (ARP) that explains memory formation and the roles in health and disease of sAPPa, Abeta, tau, growth factors, kinases, phosphatases, cholesterol, and other agents. ARP enables the development of a coherent theory of AD.

**Related theories.** Cholesterol has been repeatedly recognized as an important factor in AD.<sup>121,173</sup> However, such work is based on its promotion of Abeta, its link with CVD, and evidence of lipid dysregulation in AD. I found only one paper that points to cholesterol as the central agent in AD,<sup>158</sup> but it only focuses on chronic cholesterol as the driving force behind neurodegeneration, without addressing anterograde memory symptoms and plasticity agents and processes. All of this work views cholesterol negatively (opposite to ARP) and does not explain the disease

mechanisms and pathological process.

Likewise, tau has long been known to be the main pathological factor correlated with symptoms, but no coherent story for why it is phosphorylated in health and disease has been presented. The ARP account in which Cgen requires destabilization and Cres removes losing candidates naturally explains p-tau and its chronicity-induced accumulation. Many hypotheses have been raised in AD research, including cholinergic, Abeta, tau propagation, mitochondria, calcium, neurovascular, inflammation, microbes, metal ion, and lymphatic hypotheses,<sup>2</sup> and type 3 diabetes.<sup>164</sup> As discussed above, these are factors that affect AD risk but are not fundamental to the disease.

**ARP.** Brain plasticity is one of the most heavily researched areas of neuroscience. Competition between spines and elimination of losing ones is an established idea in plasticity research, with strong evidence.<sup>9</sup> ARP is the first theory of plasticity that presents a coherent mechanistic story as to how initial potentiation switches to consolidation, and the first that seamlessly integrates structural plasticity with neurotransmission plasticity and explains the roles of cholesterol, APP, tau, and other agents.

Strong high-level support for ARP comes from its structural similarity to other biological theories. Notably, candidate generation followed by competition is the cornerstone of the theory of evolution. In immunity, clonal selection of B and T cells can be viewed as candidate generation, while memory T cells result from consolidation. The principle of DEP has some superficial resemblance to the notion of hormesis in toxicology.<sup>174</sup> While the opposite effects of CaMKII vs. PP2B and of TrkB/TrkA vs. p75 are clearly known, as far as I know this paper is the first in which DEP is phrased as a general biological principle. Note that DEP is not restricted to plasticity and applies to neuromodulators as well (see dopamine and serotonin examples given above). It also applies to the immune system, with mechanisms that will be described elsewhere.

This paper focused on the main notions relevant to plasticity and AD, to show the forest rather than a huge number of trees. Additional topics are left to future texts, including the difference between LDLR and LRP1, other LRP, gangliosides and SPM, Src and Fyn kinases, prion protein, reelin, AICD, smoking, myelin, mGluRs, Cdc42, Arc/Arg3.1, adenosine, p38, cofilin and other non-tau cytoskeleton proteins, specific adhesion molecules, alpha-synuclein, TGF-beta, NFkB, homeostatic plasticity, the difference between different Abeta species, etc.

A topic that is of particular importance is the timeline of winner enhancement. For example, CaMKII is autophosphorylated to keep it going without calcium. Does PKC (which is calcium-dependent) switch to PKMz (which shows constitutive activity) at the same time? It seems that it should, otherwise it would continue to promote sAPPa and oppose GluA2. In addition, is GluN2A eventually removed from winners, like GluA1? More research is needed on these topics.

Additional research is also needed with respect to LR homeostasis. How precisely does cholesterol get incorporated in PM LRs? One possibility is that it is transported by caveolin1,

but the precise mechanisms are still not clear.

**Sleep.** AD is associated with impaired sleep. Sleep is crucial for memory and plasticity, and the genes that are most upregulated in sleep support lipid synthesis and transport and LRs.<sup>106</sup> There is some controversy around the synaptic homeostasis hypothesis, in which the goal of sleep (or at least of slow-wave sleep) is to globally downscale synapses. In ARP, sleep supports the prolonged late part of Cres, which indeed involves massive loser removal and reduced calcium entry in winning synapses. However, sleep also strengthens winning synapses.

**Neurogenesis.** Adult neurogenesis is crucial for memory,<sup>175</sup> and occurs in the hippocampus DG, which receives inputs from ETRC reelin neurons, which show specific vulnerability in AD. In ARP, new neuron candidates are generated during Cgen. New cells require substantial resources to mature, so we expect adult neurogenesis to be impaired in AD, which is indeed the case.<sup>176</sup> Unlike synaptogenesis, which is a ubiquitous process, neurogenesis-related evidence is small. However, its impairment may well be important in AD.

**Dementia.** This paper focused on AD, but ARP and LRAD also provide a reasonable account of other types of dementia, in particular vascular dementia. In addition, zinc, iron and copper are fundamental in cellular processes and are dysregulated in AD.<sup>2</sup> Metals interact with ApoE, and the link to LRs and to other types of dementia should be further investigated.

Frontotemporal dementia (FTD) has a major variant that shows tau pathology. Nonetheless, in my view, FTD does not stem from the same reasons as AD. A detailed theory of FTD that includes all of its main variants will be presented elsewhere.

**Theory predictions.** ARP and LRAD are supported by very strong evidence, including by patient data and by a large number of animal models developed for AD and brain plasticity. This evidence pertains to the details underlying the theories. Our main theory prediction is that what causes the human disease diagnosed as AD is reduced cholesterol in neural PM LRs during plasticity. This has not been directly shown yet. One way of showing it would be via clinical trials with the participation of people diagnosed with AD or known to be at a high risk, which is obviously a very long and risky process.

The presented theory points to several promising directions for treating AD. I hope that some of these will be taken, to help patients, families, caretakers and the community at large.

## Acknowledgements

I thank Nimrod Rappoport for many discussions on various biological matters, and for commenting on an early draft of this paper. I thank Yair Safrai and Yoav Lorch for their continued support.

## References

- [1] Alzheimer's Association. 2023 Alzheimer's disease facts and figures. *Alzheimer's & Dementia*. 2023;19(4):1598–1695.
- [2] Liu PP, Xie Y, Meng XY, Kang JS. History and progress of hypotheses and clinical trials for Alzheimer's disease. *Signal transduction and targeted therapy*. 2019;4(1):29.
- [3] Morris GP, Clark IA, Vissel B. Questions concerning the role of amyloid- $\beta$  in the definition, aetiology and diagnosis of Alzheimer's disease. *Acta Neuropathologica*. 2018;136(5):663–689.
- [4] Murphy C. Olfactory and other sensory impairments in Alzheimer disease. *Nature Reviews Neurology*. 2019;15(1):11–24.
- [5] Kaufman SK, Del Tredici K, Thomas TL, Braak H, Diamond MI. Tau seeding activity begins in the transentorhinal/entorhinal regions and anticipates phospho-tau pathology in Alzheimer's disease and PART. *Acta neuropathologica*. 2018;136(1):57–67.
- [6] Area-Gomez E, Schon EA. Alzheimer disease. *Organelle Contact Sites: From Molecular Mechanism to Disease*. 2017;p. 149–156.
- [7] Crews L, Masliah E. Molecular mechanisms of neurodegeneration in Alzheimer's disease. *Human molecular genetics*. 2010;19(R1):R12–R20.
- [8] Abraham WC, Jones OD, Glanzman DL. Is plasticity of synapses the mechanism of long-term memory storage? *NPJ science of learning*. 2019;4(1):1–10.
- [9] Stein IS, Zito K. Dendritic spine elimination: molecular mechanisms and implications. *The Neuroscientist*. 2019;25(1):27–47.
- [10] Beaulieu JM, Espinoza S, Gainetdinov RR. Dopamine receptors—IUPHAR review 13. *British J Pharmacol*. 2015;172(1):1–23.
- [11] Barnes NM, Sharp T. A review of central 5-HT receptors and their function. *Neuropharmacol*. 1999;38(8):1083–1152.
- [12] Bednarek E, Caroni P.  $\beta$ -Adducin is required for stable assembly of new synapses and improved memory upon environmental enrichment. *Neuron*. 2011;69(6):1132–1146.
- [13] Biederer T, Kaeser PS, Blanpied TA. Transcellular nanoalignment of synaptic function. *Neuron*. 2017;96(3):680–696.

- [14] Chung HJ, Xia J, Scannevin RH, Zhang X, Huganir RL. Phosphorylation of the AMPA receptor subunit GluR2 differentially regulates its interaction with PDZ domain-containing proteins. *Journal of Neuroscience*. 2000;20(19):7258–7267.
- [15] Fawcett JW, Oohashi T, Pizzorusso T. The roles of perineuronal nets and the perinodal extracellular matrix in neuronal function. *Nature Reviews Neuroscience*. 2019;20(8):451–465.
- [16] Muriel O, Sánchez-Álvarez M, Strippoli R, Del Pozo MA. Role of the endocytosis of caveolae in intracellular signaling and metabolism. *Endocytosis and Signaling*. 2018;p. 203–234.
- [17] Leschik J, Eckenstaler R, Endres T, Munsch T, Edelman E, Richter K, et al. Prominent postsynaptic and dendritic exocytosis of endogenous BDNF vesicles in BDNF-GFP knock-in mice. *Molecular neurobiology*. 2019;56:6833–6855.
- [18] Hébert M, Lesept F, Vivien D, Macrez R. The story of an exceptional serine protease, tissue-type plasminogen activator (tPA). *Revue neurologique*. 2016;172(3):186–197.
- [19] Knapska E, Kaczmarek L. Matrix Metalloproteinase 9 (MMP-9) in Learning and Memory. In: *Novel Mechanisms of Memory*. Springer; 2016. p. 161–181.
- [20] Tapia-Rojas C, Cabezas-Opazo F, Deaton CA, Vergara EH, Johnson GV, Quintanilla RA. It's all about tau. *Progress in neurobiology*. 2019;175:54–76.
- [21] Cervellini I, Galino J, Zhu N, Allen S, Birchmeier C, Bennett DL. Sustained MAPK/ERK activation in adult Schwann cells impairs nerve repair. *Journal of Neuroscience*. 2018;38(3):679–690.
- [22] Ludka FK, Cunha MP, Dal-Cim T, Binder LB, Constantino LC, Massari CM, et al. Atorvastatin protects from A $\beta$  1–40-induced cell damage and depressive-like behavior via ProBDNF cleavage. *Molecular neurobiology*. 2017;54:6163–6173.
- [23] Fan QW, Yu W, Senda T, Yanagisawa K, Michikawa M. Cholesterol-dependent modulation of tau phosphorylation in cultured neurons. *J neurochem*. 2001;76(2):391–400.
- [24] Zhou FQ, Zhou J, Dedhar S, Wu YH, Snider WD. NGF-induced axon growth is mediated by localized inactivation of GSK-3 $\beta$  and functions of the microtubule plus end binding protein APC. *Neuron*. 2004;42(6):897–912.
- [25] Itami C, Kimura F, Kohno T, Matsuoka M, Ichikawa M, Tsumoto T, et al. Brain-derived neurotrophic factor-dependent unmasking of “silent” synapses in the developing mouse barrel cortex. *Proceedings of the National Academy of Sciences*. 2003;100(22):13069–13074.

- [26] Park H, Poo Mm. Neurotrophin regulation of neural circuit development and function. *Nat Rev Neurosci.* 2013;14(1):7–23.
- [27] Nicoll RA, Schulman H. Synaptic memory and CaMKII: a review. *Physiological Reviews*;103(4):2877–2925.
- [28] Armijo-Weingart L, Gallo G. It takes a village to raise a branch: cellular mechanisms of the initiation of axon collateral branches. *Molecular and Cellular Neuroscience.* 2017;84:36–47.
- [29] Henley JM, Wilkinson KA. AMPA receptor trafficking and the mechanisms underlying synaptic plasticity and cognitive aging. *Dialogues in clinical neuroscience.* 2013;15(1):11–27.
- [30] Zhu JJ, Qin Y, Zhao M, Van Aelst L, Malinow R. Ras and Rap control AMPA receptor trafficking during synaptic plasticity. *Cell.* 2002;110(4):443–455.
- [31] Bissen D, Foss F, Acker-Palmer A. AMPA receptors and their minions: auxiliary proteins in AMPA receptor trafficking. *Cellular and Molecular Life Sciences.* 2019;76:2133–2169.
- [32] Boehm J, Kang MG, Johnson RC, Esteban J, Huganir RL, Malinow R. Synaptic incorporation of AMPA receptors during LTP is controlled by a PKC phosphorylation site on GluR1. *Neuron.* 2006;51(2):213–225.
- [33] Pilpel Y, Segal M. Activation of PKC induces rapid morphological plasticity in dendrites of hippocampal neurons via Rac and Rho-dependent mechanisms. *European J Neurosci.* 2004;19(12):3151–3164.
- [34] Yamawaki N, Li X, Lambot L, Ren LY, Radulovic J, Shepherd GM. Long-range inhibitory intersection of a retrosplenial thalamocortical circuit by apical tuft-targeting CA1 neurons. *Nat Neurosci.* 2019;22(4):618–626.
- [35] Balmaceda V, Cuchillo-Ibáñez I, Pujadas L, García-Ayllón MS, Saura CA, Nimpf J, et al. ApoER2 processing by presenilin-1 modulates reelin expression. *FASEB J.* 2014;28(4):1543–1554.
- [36] Stranahan AM, Erion JR, Wosiski-Kuhn M. Reelin signaling in development, maintenance, and plasticity of neural networks. *Ageing Res Rev.* 2013;12(3):815–822.
- [37] Van Der Kant R, Goldstein LS. Cellular functions of the amyloid precursor protein from development to dementia. *Developmental cell.* 2015;32(4):502–515.



- [38] Ge YW, Lahiri D. Regulation of promoter activity of the APP gene by cytokines and growth factors: implications in Alzheimer's disease. *Annals of the New York Academy of Sciences*. 2002;973(1):463–467.
- [39] Huang YWA, Zhou B, Wernig M, Südhof TC. ApoE2, ApoE3, and ApoE4 differentially stimulate APP transcription and A $\beta$  secretion. *Cell*. 2017;168(3):427–441.
- [40] Nigam SM, Xu S, Kritikou JS, Marosi K, Brodin L, Mattson MP. Exercise and BDNF reduce A $\beta$  production by enhancing  $\alpha$ -secretase processing of APP. *J Neurochem*. 2017;142(2):286–296.
- [41] Yang C, Liu Y, Ni X, Li N, Zhang B, Fang X. Enhancement of the nonamyloidogenic pathway by exogenous NGF in an Alzheimer transgenic mouse model. *Neuropeptides*. 2014;48(4):233–238.
- [42] Ledesma MD, Da Silva JS, Crassaerts K, Delacourte A, De Strooper B, Dotti CG. Brain plasmin enhances APP  $\alpha$ -cleavage and A $\beta$  degradation and is reduced in Alzheimer's disease brains. *EMBO reports*. 2000;1(6):530–535.
- [43] Fragkouli A, Tzinia AK, Charalampopoulos I, Gravanis A, Tsilibary EC. Matrix metalloproteinase-9 participates in NGF-induced  $\alpha$ -secretase cleavage of amyloid- $\beta$  protein precursor in PC12 cells. *J Alzheimer's Disease*. 2011;24(4):705–719.
- [44] Buxbaum JD, Gandy SE, Cicchetti P, Ehrlich ME, Czernik AJ, Fracasso RP, et al. Processing of Alzheimer beta/A4 amyloid precursor protein: modulation by agents that regulate protein phosphorylation. *Proc Natl Acad Sci U S A*. 1990;87(15):6003–6006.
- [45] Kojro E, Gimpl G, Lammich S, März W, Fahrenholz F. Low cholesterol stimulates the nonamyloidogenic pathway by its effect on the  $\alpha$ -secretase ADAM 10. *Proc Natl Acad Sci U S A*. 2001;98(10):5815–5820.
- [46] Ehehalt R, Keller P, Haass C, Thiele C, Simons K. Amyloidogenic processing of the Alzheimer  $\beta$ -amyloid precursor protein depends on lipid rafts. *J Cell Biol*. 2003;160(1):113–123.
- [47] Wang W, Mutka AL, Zmrzljak UP, Rozman D, Tanila H, Gylling H, et al. Amyloid precursor protein  $\alpha$ -and  $\beta$ -cleaved ectodomains exert opposing control of cholesterol homeostasis via SREBP2. *FASEB J*. 2014;28(2):849–860.
- [48] Jimenez S, Torres M, Vizuite M, Sanchez-Varo R, Sanchez-Mejias E, Trujillo-Estrada L, et al. Age-dependent accumulation of soluble amyloid  $\beta$  (A $\beta$ ) oligomers reverses the neuroprotective effect of soluble amyloid precursor protein- $\alpha$  (sAPP $\alpha$ ) by modulating

phosphatidylinositol 3-kinase (PI3K)/Akt-GSK-3 $\beta$  pathway in Alzheimer mouse model. *J Biological Chem.* 2011;286(21):18414–18425.

- [49] Wang X, Yu S, Gao SJ, Hu JP, Wang Y, Liu HX. Insulin inhibits Abeta production through modulation of APP processing in a cellular model of Alzheimer's disease. *Neuroendocrinol Lett.* 2014;35:224–229.
- [50] Livingstone RW, Elder MK, Singh A, Westlake CM, Tate WP, Abraham WC, et al. Secreted amyloid precursor protein-alpha enhances LTP through the synthesis and trafficking of Ca<sup>2+</sup>-permeable AMPA receptors. *Frontiers in Molecular Neuroscience.* 2021;14:660208.
- [51] Hick M, Herrmann U, Weyer SW, Mallm JP, Tschäpe JA, Borgers M, et al. Acute function of secreted amyloid precursor protein fragment APPs $\alpha$  in synaptic plasticity. *Acta neuropathologica.* 2015;129(1):21–37.
- [52] Sosa LJ, Cáceres A, Dupraz S, Oksdath M, Quiroga S, Lorenzo A. The physiological role of the amyloid precursor protein as an adhesion molecule in the developing nervous system. *J Neurochem.* 2017;143(1):11–29.
- [53] Obregon D, Hou H, Deng J, Giunta B, Tian J, Darlington D, et al. Soluble amyloid precursor protein- $\alpha$  modulates  $\beta$ -secretase activity and amyloid- $\beta$  generation. *Nat Comm.* 2012;3(1):1–9.
- [54] Rohe M, Synowitz M, Glass R, Paul SM, Nykjaer A, Willnow TE. Brain-derived neurotrophic factor reduces amyloidogenic processing through control of SORLA gene expression. *J Neurosci.* 2009;29(49):15472–15478.
- [55] Gugustea R, Jia Z. Genetic manipulations of AMPA glutamate receptors in hippocampal synaptic plasticity. *Neuropharmacology.* 2021;194:108630.
- [56] Martin M, Dotti CG, Ledesma MD. Brain cholesterol in normal and pathological aging. *Biochimica et Biophysica Acta (BBA)-Molecular and Cell Biology of Lipids.* 2010;1801(8):934–944.
- [57] Spagnuolo MS, Donizetti A, Iannotta L, Aliperti V, Cupidi C, Bruni AC, et al. Brain-derived neurotrophic factor modulates cholesterol homeostasis and Apolipoprotein E synthesis in human cell models of astrocytes and neurons. *J Cellular Physiol.* 2018;233(9):6925–6943.
- [58] Strachan-Whaley MR, Reilly K, Dobson J, Kalisch BE. Map kinase and PKC signaling pathways modulate NGF-mediated apoE transcription. *Neurosci Letters.* 2015;595:54–59.

- [59] Wang JM, Irwin RW, Brinton RD. Activation of estrogen receptor  $\alpha$  increases and estrogen receptor  $\beta$  decreases apolipoprotein E expression in hippocampus in vitro and in vivo. *Proc Natl Acad Sci U S A*. 2006;103(45):16983–16988.
- [60] Mahley RW, Huang Y. Apolipoprotein e sets the stage: response to injury triggers neuropathology. *Neuron*. 2012;76(5):871–885.
- [61] Shimano H, Sato R. SREBP-regulated lipid metabolism: convergent physiology–divergent pathophysiology. *Nat Rev Endocrinol*. 2017;13(12):710.
- [62] Yamazaki Y, Zhao N, Caulfield TR, Liu CC, Bu G. Apolipoprotein E and Alzheimer disease: pathobiology and targeting strategies. *Nat Rev Neurol*. 2019;15(9):501–518.
- [63] Mondadori CR, de Quervain DJF, Buchmann A, Mustovic H, Wollmer MA, Schmidt CF, et al. Better memory and neural efficiency in young apolipoprotein E  $\epsilon$ 4 carriers. *Cerebral cortex*. 2007;17(8):1934–1947.
- [64] Sezgin E, Levental I, Mayor S, Eggeling C. The mystery of membrane organization: composition, regulation and roles of lipid rafts. *Nature reviews Molecular cell biology*. 2017;18(6):361–374.
- [65] Head BP, Patel HH, Insel PA. Interaction of membrane/lipid rafts with the cytoskeleton: impact on signaling and function: membrane/lipid rafts, mediators of cytoskeletal arrangement and cell signaling. *Biochimica et Biophysica Acta (BBA)-Biomembranes*. 2014;1838(2):532–545.
- [66] Whitehead SN, Gangaraju S, Aylsworth A, Hou ST. Membrane raft disruption results in neuritic retraction prior to neuronal death in cortical neurons. *Bioscience trends*. 2012;6(4):183–191.
- [67] Albanesi JP, Barylko B, DeMartino GN, Jameson DM. Palmitoylated Proteins in Dendritic Spine Remodeling. *Front Synaptic Neurosci*. 2020;12.
- [68] Pike LJ. Growth factor receptors, lipid rafts and caveolae: an evolving story. *Biochimica et Biophysica Acta (BBA)-Molecular Cell Research*. 2005;1746(3):260–273.
- [69] Baenziger JE, Domville JA, Therien JD. The role of cholesterol in the activation of nicotinic acetylcholine receptors. In: *Current topics in membranes*. vol. 80. Elsevier; 2017. p. 95–137.
- [70] Mauch DH, Nägler K, Schumacher S, Göritz C, Müller EC, Otto A, et al. CNS synaptogenesis promoted by glia-derived cholesterol. *Science*. 2001;294(5545):1354–1357.

- [71] Hering H, Lin CC, Sheng M. Lipid rafts in the maintenance of synapses, dendritic spines, and surface AMPA receptor stability. *J Neurosci*. 2003;23(8):3262–3271.
- [72] Frank C, Rufini S, Tancredi V, Forcina R, Grossi D, D'arcangelo G. Cholesterol depletion inhibits synaptic transmission and synaptic plasticity in rat hippocampus. *Exp Neurol*. 2008;212(2):407–414.
- [73] Area-Gomez E, del Carmen Lara Castillo M, Tambini MD, Guardia-Laguarta C, De Groof AJ, Madra M, et al. Upregulated function of mitochondria-associated ER membranes in Alzheimer disease. *The EMBO journal*. 2012;31(21):4106–4123.
- [74] Waugh MG. Raft-like membranes from the trans-Golgi network and endosomal compartments. *Nature Protocols*. 2013;8(12):2429–2439.
- [75] Chowdhury D, Hell JW. Ca<sup>2+</sup>/calmodulin binding to PSD-95 downregulates its palmitoylation and ampars in long-term depression. *Frontiers in Synaptic Neuroscience*. 2019;11:6.
- [76] Sanz-Clemente A, Nicoll RA, Roche KW. Diversity in NMDA receptor composition: many regulators, many consequences. *The Neuroscientist*. 2013;19(1):62–75.
- [77] Plant K, Pelkey KA, Bortolotto ZA, Morita D, Terashima A, McBain CJ, et al. Transient incorporation of native GluR2-lacking AMPA receptors during hippocampal long-term potentiation. *Nature neuroscience*. 2006;9(5):602–604.
- [78] Miller EC, Teravskis PJ, Dummer BW, Zhao X, Haganir RL, Liao D. Tau phosphorylation and tau mislocalization mediate soluble A $\beta$  oligomer-induced AMPA glutamate receptor signaling deficits. *European Journal of Neuroscience*. 2014;39(7):1214–1224.
- [79] Liu PW, Hosokawa T, Hayashi Y. Regulation of synaptic nanodomain by liquid–liquid phase separation: A novel mechanism of synaptic plasticity. *Current Opinion in Neurobiology*. 2021;69:84–92.
- [80] Shouval HZ, Wang SSH, Wittenberg GM. Spike Timing Dependent Plasticity: A Consequence of More Fundamental Learning Rules. *Frontiers in Computational Neuroscience*. 2010;4:19.
- [81] Saneyoshi T, Matsuno H, Suzuki A, Murakoshi H, Hedrick NG, Agnello E, et al. Reciprocal activation within a kinase-effector complex underlying persistence of structural LTP. *Neuron*. 2019;102(6):1199–1210.
- [82] Sacktor TC, Fenton AA. What does LTP tell us about the roles of CaMKII and PKM $\zeta$  in memory? *Molecular brain*. 2018;11:1–9.

- [83] Egawa J, Pearn ML, Lemkuil BP, Patel PM, Head BP. Membrane lipid rafts and neurobiology: age-related changes in membrane lipids and loss of neuronal function. *J Physiol.* 2016;594(16):4565–4579.
- [84] Bakota L, Brandt R. Why kiss-and-hop explains that tau does not stabilize microtubules and does not interfere with axonal transport (at physiological conditions). *Cytoskeleton*;
- [85] Cabrales Fontela Y, Kadavath H, Biernat J, Riedel D, Mandelkow E, Zweckstetter M. Multivalent cross-linking of actin filaments and microtubules through the microtubule-associated protein Tau. *Nature communications.* 2017;8(1):1981.
- [86] Gong CX, Iqbal K. Hyperphosphorylation of microtubule-associated protein tau: a promising therapeutic target for Alzheimer disease. *Current medicinal chemistry.* 2008;15(23):2321–2328.
- [87] Sontag JM, Nunbhakdi-Craig V, Sontag E. Leucine carboxyl methyltransferase 1 (LCMT1)-dependent methylation regulates the association of protein phosphatase 2A and Tau protein with plasma membrane microdomains in neuroblastoma cells. *J Biological Chem.* 2013;288(38):27396–27405.
- [88] Shen LL, Li WW, Xu YL, Gao SH, Xu MY, Bu XL, et al. Neurotrophin receptor p75 mediates amyloid  $\beta$ -induced tau pathology. *Neurobiol of Disease.* 2019;132:104567.
- [89] Bai X, Wu J, Zhang M, Xu Y, Duan L, Yao K, et al. DHCR24 knock-down induced tau hyperphosphorylation at Thr181, Ser199, Thr231, Ser262, Ser396 epitopes and inhibition of autophagy by overactivation of GSK3 $\beta$ /mTOR signaling. *Frontiers in Aging Neuroscience.* 2021;13:513605.
- [90] Merezko M, Uronen RL, Huttunen HJ. The cell biology of tau secretion. *Frontiers in Molecular Neuroscience.* 2020;13:569818.
- [91] Simons M, Keller P, De Strooper B, Beyreuther K, Dotti CG, Simons K. Cholesterol depletion inhibits the generation of  $\beta$ -amyloid in hippocampal neurons. *Proc Natl Acad Sci U S A.* 1998;95(11):6460–6464.
- [92] Grimm MO, Grimm HS, Tomic I, Beyreuther K, Hartmann T, Bergmann C. Independent inhibition of Alzheimer disease  $\beta$ -and  $\gamma$ -secretase cleavage by lowered cholesterol levels. *Journal of Biological Chemistry.* 2008;283(17):11302–11311.
- [93] Grimm MO, Grimm HS, Pätzold AJ, Zinser EG, Halonen R, Duering M, et al. Regulation of cholesterol and sphingomyelin metabolism by amyloid- $\beta$  and presenilin. *Nat cell biol.* 2005;7(11):1118–1123.

- [94] Cho YY, Kwon OH, Chung S. Preferred endocytosis of amyloid precursor protein from cholesterol-enriched lipid raft microdomains. *Molecules*. 2020;25(23):5490.
- [95] Costantini C, Weindruch R, Della Valle G, Puglielli L. A TrkA-to-p75NTR molecular switch activates amyloid  $\beta$ -peptide generation during aging. *Biochemical Journal*. 2005;391(1):59–67.
- [96] Guglielmotto M, Monteleone D, Giliberto L, Fornaro M, Borghi R, Tamagno E, et al. Amyloid- $\beta$  42 activates the expression of BACE1 through the JNK pathway. *Journal of Alzheimer's Disease*. 2011;27(4):871–883.
- [97] Hsieh H, Boehm J, Sato C, Iwatsubo T, Tomita T, Sisodia S, et al. AMPAR removal underlies A $\beta$ -induced synaptic depression and dendritic spine loss. *Neuron*. 2006;52(5):831–843.
- [98] Bruno MA, Leon WC, Fragoso G, Mushynski WE, Almazan G, Cuellar AC. Amyloid  $\beta$ -induced nerve growth factor dysmetabolism in Alzheimer disease. *J Neuropathol Exp Neurol*. 2009;68(8):857–869.
- [99] Knafo S, Esteban JA. PTEN: local and global modulation of neuronal function in health and disease. *Trends Neurosci*. 2017;40(2):83–91.
- [100] Petratos S, Li QX, George AJ, Hou X, Kerr ML, Unabia SE, et al. The  $\beta$ -amyloid protein of Alzheimer's disease increases neuronal CRMP-2 phosphorylation by a Rho-GTP mechanism. *Brain*. 2008;131(1):90–108.
- [101] Dougherty JJ, Wu J, Nichols RA.  $\beta$ -Amyloid regulation of presynaptic nicotinic receptors in rat hippocampus and neocortex. *J Neurosci*. 2003;23(17):6740–6747.
- [102] Zhang GL, Zhang X, Wang Xm, Li JP. Towards understanding the roles of heparan sulfate proteoglycans in Alzheimer's disease. *BioMed research international*;2014.
- [103] Di Scala C, Chahinian H, Yahi N, Garay N, Fantini J. Interaction of Alzheimer's  $\beta$ -amyloid peptides with cholesterol: mechanistic insights into amyloid pore formation. *Biochemistry*. 2014;53(28):4489–4502.
- [104] Puzzo D, Privitera L, Leznik E, Fa M, Staniszewski A, Palmeri A, et al. Picomolar amyloid- $\beta$  positively modulates synaptic plasticity and memory in hippocampus. *Journal of Neuroscience*. 2008;28(53):14537–14545.
- [105] Finnie PS, Nader K. Amyloid beta secreted during consolidation prevents memory malleability. *Curr Biol*. 2020;30(10):1934–1940.

- [106] Rasch B, Born J. About sleep's role in memory. *Physiol Rev.* 2013;93(2):681–766.
- [107] Lazar AN, Hanbouch L, Boussicaut L, Fourmaux B, Daira P, Millan MJ, et al. Lipid Dys-Homeostasis Contributes to APOE4-Associated AD Pathology. *Cells.* 2022;11(22):3616.
- [108] Ferris HA, Perry RJ, Moreira GV, Shulman GI, Horton JD, Kahn CR. Loss of astrocyte cholesterol synthesis disrupts neuronal function and alters whole-body metabolism. *Proc Natl Acad Sci U S A.* 2017;114(5):1189–1194.
- [109] Stewart KL, Radford SE. Amyloid plaques beyond A $\beta$ : a survey of the diverse modulators of amyloid aggregation. *Biophysical Rev.* 2017;9(4):405–419.
- [110] Georgieva ER, Xiao S, Borbat PP, Freed JH, Eliezer D. Tau binds to lipid membrane surfaces via short amphipathic helices located in its microtubule-binding repeats. *Biophysical J.* 2014;107(6):1441–1452.
- [111] Jack Jr CR, Wiste HJ, Schwarz CG, Lowe VJ, Senjem ML, Vemuri P, et al. Longitudinal tau PET in ageing and Alzheimer's disease. *Brain.* 2018;141(5):1517–1528.
- [112] Ferretti MT, Iulita MF, Cavado E, Chiesa PA, Dimech AS, Chadha AS, et al. Sex differences in Alzheimer disease – the gateway to precision medicine. *Nat Rev Neurol.* 2018;14(8):457–469.
- [113] Bateman RJ, Aisen PS, De Strooper B, Fox NC, Lemere CA, Ringman JM, et al. Autosomal-dominant Alzheimer's disease: a review and proposal for the prevention of Alzheimer's disease. *Alzheimer's research & therapy.* 2011;3(1):1–13.
- [114] Ledesma MD, Abad-Rodriguez J, Galvan C, Biondi E, Navarro P, Delacourte A, et al. Raft disorganization leads to reduced plasmin activity in Alzheimer's disease brains. *EMBO reports.* 2003;4(12):1190–1196.
- [115] Fabelo N, Martín V, Marín R, Moreno D, Ferrer I, Díaz M. Altered lipid composition in cortical lipid rafts occurs at early stages of sporadic Alzheimer's disease and facilitates APP/BACE1 interactions. *Neurobiology of aging.* 2014;35(8):1801–1812.
- [116] Molander-Melin M, Blennow K, Bogdanovic N, Dellheden B, Månsson JE, Fredman P. Structural membrane alterations in Alzheimer brains found to be associated with regional disease development; increased density of gangliosides GM1 and GM2 and loss of cholesterol in detergent-resistant membrane domains. *Journal of neurochemistry.* 2005;92(1):171–182.

- [117] Abdullah M, Kimura N, Akatsu H, Hashizume Y, Ferdous T, Tachita T, et al. Flotillin is a novel diagnostic blood marker of Alzheimer's disease. *Journal of Alzheimer's Disease*. 2019;72(4):1165–1176.
- [118] Mesa-Herrera F, Marín R, Torrealba E, Santos G, Díaz M. Neuronal ER-Signalosome Proteins as Early Biomarkers in Prodromal Alzheimer's Disease Independent of Amyloid- $\beta$  Production and Tau Phosphorylation. *Frontiers in Molecular Neuroscience*. 2022;15:879146.
- [119] Chan WH, Yau LF, Meng XY, Chan KM, Jiang ZH, Wang JR. Robust quantitation of gangliosides and sulfatides in human brain using UHPLC-MRM-MS: Method development and application in Alzheimer's disease. *Talanta*. 2023;256:124264.
- [120] Girardot N, Allinquant B, Langui D, Laquerriere A, Dubois B, Hauw JJ, et al. Accumulation of flotillin-1 in tangle-bearing neurones of Alzheimer's disease. *Neuropathology and applied neurobiology*. 2003;29(5):451–461.
- [121] Foley P. Lipids in Alzheimer's disease: A century-old story. *Biochimica et Biophysica Acta (BBA)-Molecular and Cell Biology of Lipids*. 2010;1801(8):750–753.
- [122] Mason RP, Shoemaker WJ, Shajenko L, Chambers TE, Herbette LG. Evidence for changes in the Alzheimer's disease brain cortical membrane structure mediated by cholesterol. *Neurobiol Aging*. 1992;13(3):413–419.
- [123] Yassine HN, Feng Q, Chiang J, Petrosspour LM, Fonteh AN, Chui HC, et al. ABCA1-mediated cholesterol efflux capacity to cerebrospinal fluid is reduced in patients with mild cognitive impairment and Alzheimer's disease. *Journal of the American Heart Association*. 2016;5(2):e002886.
- [124] Kölsch H, Heun R, Jessen F, Popp J, Hentschel F, Maier W, et al. Alterations of cholesterol precursor levels in Alzheimer's disease. *Biochimica et Biophysica Acta (BBA)-Molecular and Cell Biology of Lipids*. 2010;1801(8):945–950.
- [125] Phelix CF, LeBaron RG, Roberson DJ, Villanueva RE, Villareal G, Rahimi OB, et al. In Vivo and In Silico Evidence: Hippocampal Cholesterol Metabolism Decreases with Aging and Increases with Alzheimer's Disease—Modeling Brain Aging and Disease. In: 2011 IEEE 11th International Conference on Data Mining Workshops. IEEE; 2011. p. 1064–1070.
- [126] Bai X, Mai M, Yao K, Zhang M, Huang Y, Zhang W, et al. The role of DHCR24 in the pathogenesis of AD: re-cognition of the relationship between cholesterol and AD pathogenesis. *Acta Neuropathologica Communications*. 2022;10(1):35.



- [127] Varma VR, Büşra Lüleci H, Oommen AM, Varma S, Blackshear CT, Griswold ME, et al. Abnormal brain cholesterol homeostasis in Alzheimer's disease—a targeted metabolomic and transcriptomic study. *npj Aging and Mechanisms of Disease*. 2021;7(1):11.
- [128] Distl R, Meske V, Ohm TG. Tangle-bearing neurons contain more free cholesterol than adjacent tangle-free neurons. *Acta neuropathologica*. 2001;101:547–554.
- [129] Cutler RG, Kelly J, Storie K, Pedersen WA, Tammara A, Hatanpaa K, et al. Involvement of oxidative stress-induced abnormalities in ceramide and cholesterol metabolism in brain aging and Alzheimer's disease. *Proc Natl Acad Sci U S A*. 2004;101(7):2070–2075.
- [130] Chan RB, Oliveira TG, Cortes EP, Honig LS, Duff KE, Small SA, et al. Comparative lipidomic analysis of mouse and human brain with Alzheimer disease. *J Biological Chem*. 2012;287(4):2678–2688.
- [131] Xiong H, Callaghan D, Jones A, Walker DG, Lue LF, Beach TG, et al. Cholesterol retention in Alzheimer's brain is responsible for high  $\beta$ - and  $\gamma$ -secretase activities and A $\beta$  production. *Neurobiol of disease*. 2008;29(3):422–437.
- [132] Akram A, Schmeidler J, Katsel P, Hof PR, Haroutunian V. Increased expression of cholesterol transporter ABCA1 is highly correlated with severity of dementia in AD hippocampus. *Brain research*. 2010;1318:167–177.
- [133] Arenas F, Castro F, Nuñez S, Gay G, Garcia-Ruiz C, Fernandez-Checa JC. STARD1 and NPC1 expression as pathological markers associated with astrogliosis in post-mortem brains from patients with Alzheimer's disease and Down syndrome. *Aging (Albany NY)*. 2020;12(1):571.
- [134] Lazar AN, Bich C, Panchal M, Desbenoit N, Petit VW, Touboul D, et al. Time-of-flight secondary ion mass spectrometry (TOF-SIMS) imaging reveals cholesterol overload in the cerebral cortex of Alzheimer disease patients. *Acta neuropathologica*. 2013;125(1):133–144.
- [135] Wang C, Zhao F, Shen K, Wang W, Siedlak SL, Lee Hg, et al. The sterol regulatory element-binding protein 2 is dysregulated by tau alterations in Alzheimer disease. *Brain Pathol*. 2019;29(4):530–543.
- [136] Cho YY, Kwon OH, Park MK, Kim TW, Chung S. Elevated cellular cholesterol in Familial Alzheimer's presenilin 1 mutation is associated with lipid raft localization of  $\beta$ -amyloid precursor protein. *PLoS One*. 2019;14(1):e0210535.

- [137] Popp J, Meichsner S, Kölsch H, Lewczuk P, Maier W, Kornhuber J, et al. Cerebral and extracerebral cholesterol metabolism and CSF markers of Alzheimer's disease. *Biochemical pharmacology*. 2013;86(1):37–42.
- [138] Popp J, Lewczuk P, Kölsch H, Meichsner S, Maier W, Kornhuber J, et al. Cholesterol metabolism is associated with soluble amyloid precursor protein production in Alzheimer's disease. *Journal of neurochemistry*. 2012;123(2):310–316.
- [139] Adorni MP, Ruscica M, Ferri N, Bernini F, Zimetti F. Proprotein convertase subtilisin/kexin type 9, brain cholesterol homeostasis and potential implication for Alzheimer's disease. *Frontiers in aging neuroscience*. 2019;11:120.
- [140] Montesinos J, Pera M, Larrea D, Guardia-Laguarta C, Agrawal RR, Velasco KR, et al. The Alzheimer's disease-associated C99 fragment of APP regulates cellular cholesterol trafficking. *The EMBO journal*. 2020;39(20):e103791.
- [141] Pani A, Dessì S, Diaz G, La Colla P, Abete C, Mulas C, et al. Altered cholesterol ester cycle in skin fibroblasts from patients with Alzheimer's disease. *Journal of Alzheimer's disease*. 2009;18(4):829–841.
- [142] Van Acker ZP, Bretou M, Annaert W. Endo-lysosomal dysregulations and late-onset Alzheimer's disease: impact of genetic risk factors. *Molecular neurodegeneration*. 2019;14(1):20.
- [143] Grimm MO, Mett J, Grimm HS, Hartmann T. APP function and lipids: a bidirectional link. *Frontiers in molecular neuroscience*. 2017;10:63.
- [144] Chung SH. Aberrant phosphorylation in the pathogenesis of Alzheimer's disease. *BMB reports*. 2009;42(8):467–474.
- [145] Florencia Iulita M, Claudio Cuello A. The NGF metabolic pathway in the CNS and its dysregulation in Down syndrome and Alzheimer's disease. *Current Alzheimer Research*. 2016;13(1):53–67.
- [146] Carter TL, Rissman RA, Mishizen-Eberz AJ, Wolfe BB, Hamilton RL, Gandy S, et al. Differential preservation of AMPA receptor subunits in the hippocampi of Alzheimer's disease patients according to Braak stage. *Experimental neurology*. 2004;187(2):299–309.
- [147] Small SA, Schobel SA, Buxton RB, Witter MP, Barnes CA. A pathophysiological framework of hippocampal dysfunction in ageing and disease. *Nature Reviews Neuroscience*. 2011;12(10):585–601.

- [148] Braak H, Braak E. Alzheimer's disease affects limbic nuclei of the thalamus. *Acta Neuropathologica*. 1991;81(3):261–268.
- [149] Maass A, Schütze H, Speck O, Yonelinas A, Tempelmann C, Heinze HJ, et al. Laminar activity in the hippocampus and entorhinal cortex related to novelty and episodic encoding. *Nature communications*. 2014;5(1):5547.
- [150] Thomas PV, Cheng AL, Colby CC, Liu L, Patel CK, Josephs L, et al. Localization and proteomic characterization of cholesterol-rich membrane microdomains in the inner ear. *Journal of proteomics*. 2014;103:178–193.
- [151] Brady JD, Rich TC, Le X, Stafford K, Fowler CJ, Lynch L, et al. Functional role of lipid raft microdomains in cyclic nucleotide-gated channel activation. *Molecular pharmacology*. 2004;65(3):503–511.
- [152] Munderloh C, Solis GP, Bodrikov V, Jaeger FA, Wiechers M, Málaga-Trillo E, et al. Reggies/flotillins regulate retinal axon regeneration in the zebrafish optic nerve and differentiation of hippocampal and N2a neurons. *Journal of Neuroscience*. 2009;29(20):6607–6615.
- [153] Chung SD, Chen CH, Hung SH, Lin HC, Wang LH. A population-based study on the association between statin use and sudden sensorineural hearing loss. *Otolaryngology–Head and Neck Surgery*. 2015;152(2):319–325.
- [154] Lötsch J, Knothe C, Lippmann C, Ultsch A, Hummel T, Walter C. Olfactory drug effects approached from human-derived data. *Drug discovery today*. 2015;20(11):1398–1406.
- [155] Crumling MA, Liu L, Thomas PV, Benson J, Kanicki A, Kabara L, et al. Hearing loss and hair cell death in mice given the cholesterol-chelating agent hydroxypropyl- $\beta$ -cyclodextrin. *PloS one*. 2012;7(12):e53280.
- [156] Dong HK, Gim JA, Yeo SH, Kim HS. Integrated late onset Alzheimer's disease (LOAD) susceptibility genes: cholesterol metabolism and trafficking perspectives. *Gene*. 2017;597:10–16.
- [157] Love S, Bridges LR, Case CP. Neurofibrillary tangles in Niemann-Pick disease type C. *Brain*. 1995;118(1):119–129.
- [158] Castello MA, Soriano S. Rational heterodoxy: cholesterol reformation of the amyloid doctrine. *Ageing Res Rev*. 2013;12(1):282–288.

- [159] Readhead B, Haure-Mirande JV, Funk CC, Richards MA, Shannon P, Haroutunian V, et al. Multiscale analysis of independent Alzheimer's cohorts finds disruption of molecular, genetic, and clinical networks by human herpesvirus. *Neuron*. 2018;99(1):64–82.
- [160] Tzeng NS, Chung CH, Lin FH, Chiang CP, Yeh CB, Huang SY, et al. Anti-herpetic medications and reduced risk of dementia in patients with herpes simplex virus infections—a nationwide, population-based cohort study in Taiwan. *Neurotherapeutics*. 2018;15(2):417–429.
- [161] Eyting M, Xie M, Hess S, Geldsetzer P. Causal evidence that herpes zoster vaccination prevents a proportion of dementia cases. *medRxiv*. 2023;p. 2023–05.
- [162] Itzhaki RF, Wozniak MA. Herpes simplex virus type 1, apolipoprotein E, and cholesterol: a dangerous liaison in Alzheimer's disease and other disorders. *Prog Lipid Res*. 2006;45(1):73–90.
- [163] Li L, Liang J, Fu H. An update on the association between traumatic brain injury and Alzheimer's disease: focus on tau pathology and synaptic dysfunction. *Neurosci & Biobehavioral Rev*. 2020;.
- [164] de la Monte SM, Tong M, Wands JR. The 20-year voyage aboard the journal of Alzheimer's disease: docking at 'Type 3 Diabetes', environmental/exposure factors, pathogenic mechanisms, and potential treatments. *Journal of Alzheimer's Disease*. 2018;62(3):1381–1390.
- [165] Qizilbash N, Gregson J, Johnson ME, Pearce N, Douglas I, Wing K, et al. BMI and risk of dementia in two million people over two decades: a retrospective cohort study. *The lancet Diabetes & endocrinology*. 2015;3(6):431–436.
- [166] Ulrich JD, Ulland TK, Colonna M, Holtzman DM. Elucidating the role of TREM2 in Alzheimer's disease. *Neuron*. 2017;94(2):237–248.
- [167] Hoeijmakers L, Lesuis SL, Krugers H, Lucassen PJ, Korosi A. A preclinical perspective on the enhanced vulnerability to Alzheimer's disease after early-life stress. *Neurobiol Stress*. 2018;8:172–185.
- [168] Hellström-Lindahl E, Moore H, Nordberg A. Increased levels of tau protein in SH-SY5Y cells after treatment with cholinesterase inhibitors and nicotinic agonists. *Journal of neurochemistry*. 2000;74(2):777–784.
- [169] Paulavicius AM, Mizzaci CC, Tavares DR, Rocha AP, Civile VT, Schultz RR, et al. Bilingualism for delaying the onset of Alzheimer's disease: a systematic review and meta-analysis. *European Geriatric Medicine*. 2020;p. 1–8.

- [170] Heim S, Stumme J, Bittner N, Jockwitz C, Amunts K, Caspers S. Bilingualism and “brain reserve”: A matter of age. *Neurobiol Aging*. 2019;81:157–165.
- [171] Perani D, Farsad M, Ballarini T, Lubian F, Malpetti M, Fracchetti A, et al. The impact of bilingualism on brain reserve and metabolic connectivity in Alzheimer’s dementia. *Proc Natl Acad Sci U S A*. 2017;114(7):1690–1695.
- [172] Meng Q, Lin MS, Tzeng I, et al. Relationship Between Exercise and Alzheimer’s Disease: A Narrative Literature Review. *Front Neurosci*. 2020;14:131.
- [173] Puglielli L, Tanzi RE, Kovacs DM. Alzheimer’s disease: the cholesterol connection. *Nat Neurosci*. 2003;6(4):345–351.
- [174] Mattson MP. Hormesis defined. *Ageing research reviews*. 2008;7(1):1–7.
- [175] Gonçalves JT, Schafer ST, Gage FH. Adult neurogenesis in the hippocampus: from stem cells to behavior. *Cell*. 2016;167(4):897–914.
- [176] Moreno-Jiménez EP, Flor-García M, Terreros-Roncal J, Rábano A, Cafini F, Pallas-Bazarra N, et al. Adult hippocampal neurogenesis is abundant in neurologically healthy subjects and drops sharply in patients with Alzheimer’s disease. *Nat Med*. 2019;25(4):554–560.

## List of Abbreviations

Terms introduced in this paper are marked by \*\* and a **bold** font.

- 24SHC: 24S-hydroxycholesterol (oxysterol).  
27HC: 27-hydroxycholesterol.  
a7nAChR: alpha7 subunit of the nicotinic ACh receptor.  
ABCA1: ATP-binding cassette transporter sub-family A 1. ABCG1: ATP-binding cassette transporter sub-family G member 1.  
Abeta: Amyloid beta.  
ACh: Acetylcholine.  
AChE: Acetylcholinesterase (ACh breakdown).  
AD: Alzheimer's Disease.  
AICD: Amyloid precursor protein intracellular cytoplasmic/c-terminal domain.  
AMPA: Alpha-amino-3-hydroxy-5-methyl-4-isoxazolepropionic acid receptor.  
ApoE (ApoE2, ApoE3, ApoE4): Apolipoprotein E (E2, E3, E4 isoforms).  
APP: Amyloid precursor protein.  
**\*\*ARP: adaptive response plasticity.**  
BACE1: Beta-site amyloid precursor protein cleaving enzyme 1.  
BDNF: Brain-derived neurotrophic factor.  
BIN1: Myc box-dependent-interacting protein 1 (also Amphiphysin 2).  
BMI: Body mass index.  
CaMKII: Ca<sup>2+</sup>/calmodulin-dependent protein kinase II.  
Cdc42: Cell division control protein 42.  
Cdk5: Cyclin dependent kinase 5.  
**\*\*Cgen: ARP candidate generation stage.**  
CP: Calcium-permeable.  
**\*\*Cres: ARP competition resolution stage.**  
CVD: Cardiovascular Disease.  
D1R, D2R: Dopamine 1 (2) receptor.  
**\*\*DEP: Double-edged plasticity.**  
DG: Dentate gyrus.  
DHA: Docosahexanoic acid (omega 3 PUFA).  
ECM: Extracellular matrix.  
ERK: Extracellular signal-regulated kinase.  
ETRC: entorhinal cortex.  
GABA: Gamma-Aminobutyric acid.  
GluA1, GluA2: AMPAR subunits A1 and A2.  
GluN2A, GluN2B: NMDAR subunits 2A and 2B.  
GM1: monosialotetrahexosylganglioside.

GPCR: G protein-coupled receptor.  
 GSK3: Glycogen synthase kinase 3.  
 GTPase: Guanosine triphosphate hydrolase enzyme.  
 GWAS: Genome-wide association study.  
 HSPG: Heparan Sulfate ProteoGlycan.  
 IR: Insulin resistance.  
 JNK: c-Jun N-terminal kinase.  
 LC: locus coeruleus.  
 LDL(R): Low-density lipoprotein (receptor).  
 LR: Lipid raft.  
**\*\*LRAD: Lipid rafts theory of AD.**  
 LRP-1: LDL receptor-related protein 1 (also alpha-2-macroglobulin receptor).  
 LTD: Long-term depotentiation.  
 LTP: Long-term Potentiation.  
 LXR: Liver X receptor.  
 mGluR: Metabotropic glutamate receptor.  
 MMP9: Matrix metalloproteinase 9.  
 MTB: Microtubules.  
 mTOR: Mammalian target of rapamycin.  
 nAChR: Nicotinic ACh receptor.  
 NFkB: Nuclear factor kappa-light-chain-enhancer of activated B cells.  
 NFT: Neurofibrillary tangles.  
 NGF: Neural growth factor.  
 NMDAR: N-Methyl-D-aspartic acid receptor.  
 p-tau: phosphorylated tau.  
 PAI-1: Plasminogen activator inhibitor-1.  
 PCSK9: Proprotein convertase subtilisin/kexin type 9.  
 PFC: Pre-frontal cortex.  
 PKA: Protein kinase A.  
 PKC: Protein kinase C.  
 PLC: Phospholipase C.  
 PM: plasma membrane.  
 PP1: Protein phosphatase 1.  
 PP2A: Protein phosphatase 2.  
 PP2B: Protein phosphatase 3 (also calcineurin).  
 proBDNF, proNGF: Precursor forms of BDNF, NGF.  
 PTEN: Phosphatase and tensin homolog.  
 PUFA: Polyunsaturated fatty acid.  
 Rac1: Ras-related C3 botulinum toxin substrate 1.

RhoA: Ras homolog family member A.  
sAPPa: soluble APP alpha (APP after alpha- and gamma-secretase cleavage).  
SNP: Single-nucleotide polymorphism.  
SORLA: sorting protein-related receptor (also L11 and sortilin-related receptor with A-type repeats).  
SPM: sphingomyelin.  
SREBP: Sterol regulatory element-binding protein.  
TBI: Traumatic brain injury.  
tPA: Tissue plasminogen activator.  
TREM2: Triggering receptor expressed on myeloid cells 2.  
TrkA, TrkB: Tropomyosin receptor kinase A, B.



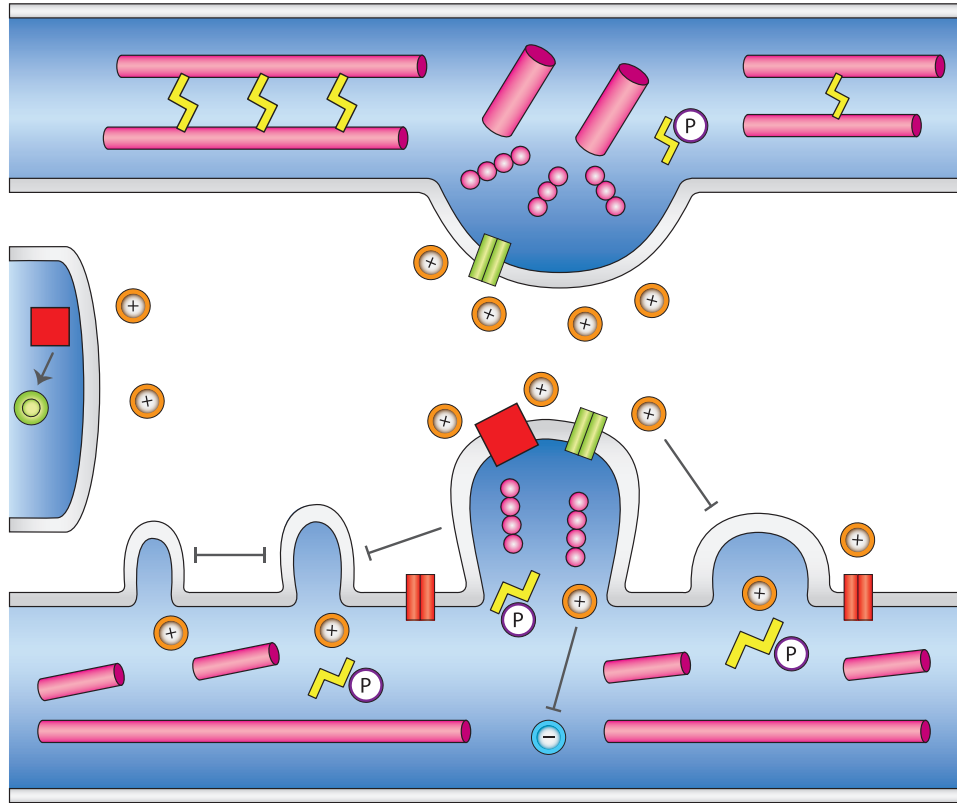


Figure 1: **Candidate generation (Cgen).** Neural activity triggers the release and activation of Cgen agents (e.g., tPA, MMP9, BDNF; + circles). These (i) induce tau (yellow) phosphorylation (P), which destabilizes cytoskeleton microtubules (pink-purple cylinders) to allow candidate generation, (ii) induce the formation of competing candidates (four postsynaptic dendritic spines, one presynaptic axon bouton, calcium-permeable glutamate receptors (red cylinders)) supported by dynamic actin (pink-purple circles), (iii) suppress Cres agents (– circle), and (iv) promote candidate growth. sAPPa (red square) is located outside lipid rafts (light green cylinders) and promotes Cgen. In astrocytes, it promotes cholesterol synthesis (green circle). // Upper part: presynaptic neuron. Lower part: postsynaptic neuron. Left part: astrocyte.

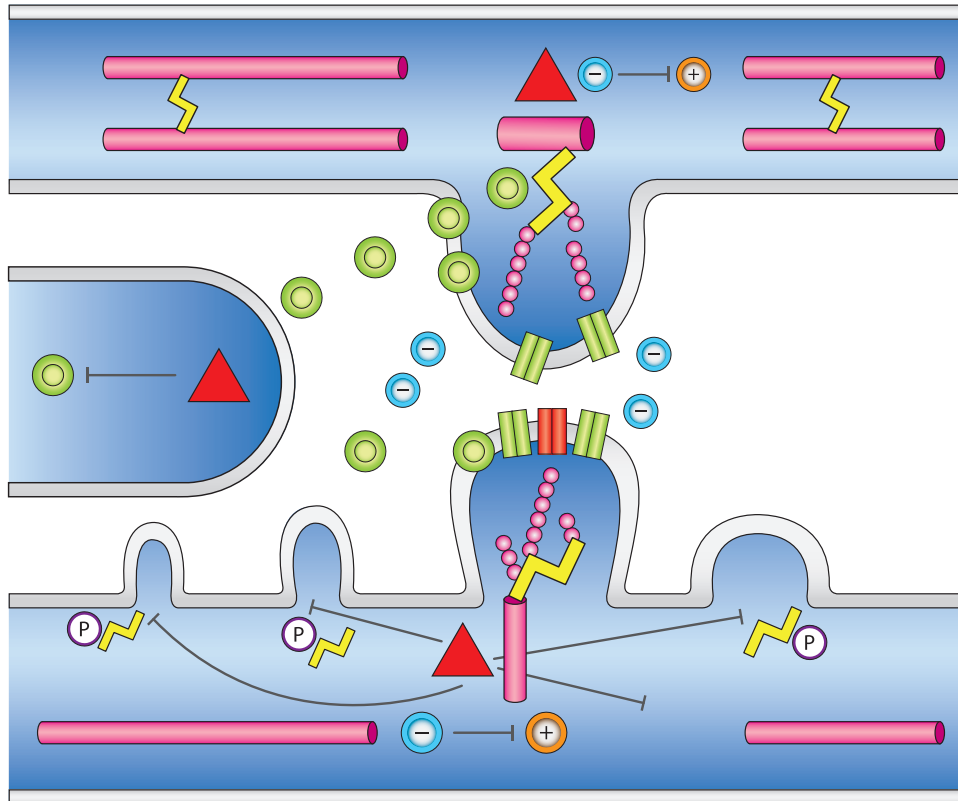


Figure 2: **Competition resolution (Cres)**. Astrocyte-produced cholesterol transported by ApoE (green circles) triggers the switch to Cres, which includes Abeta production (red triangle) and lipid raft formation. Winners are enhanced, active tau supports growth by linking microtubules and active actin, CP glutamate receptors translocate to synapses, and Abeta suppresses losing candidates, cholesterol, and Cgen agents.

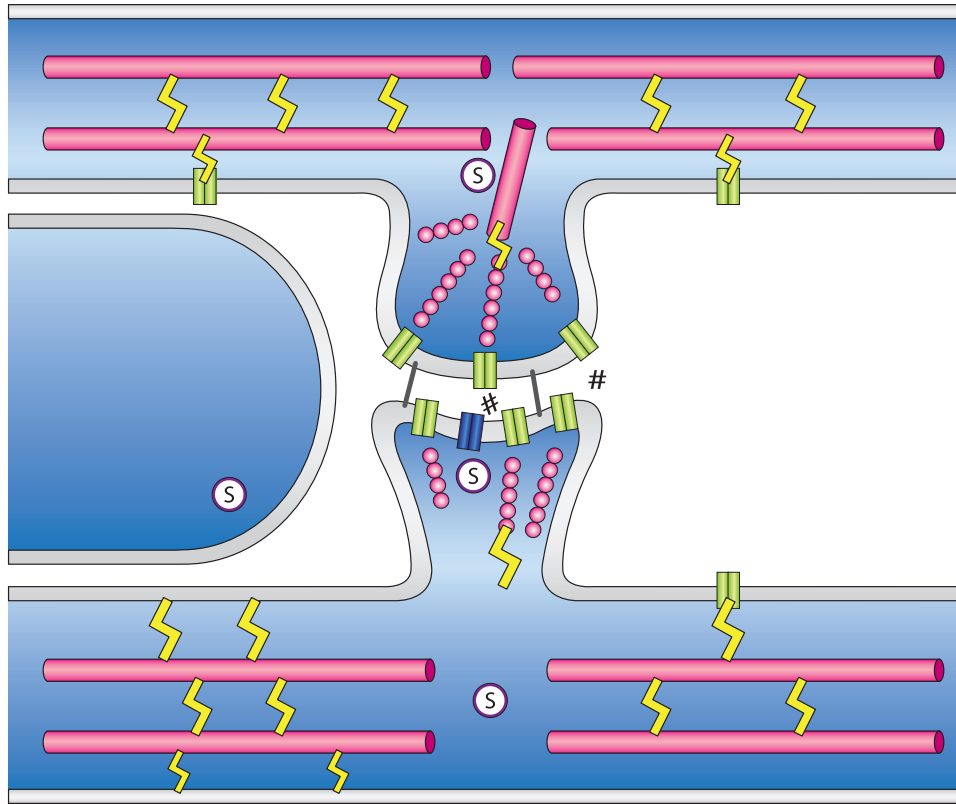


Figure 3: **The stable state.** Presynaptic and postsynaptic winners and the astrocyte processes supporting the new synapse complete their growth. Stability agents (S circles) maintain the stable state. PP2A dephosphorylates tau to allow it to support structural elements. Lipid rafts cooperate with the cytoskeleton to support receptor anchoring. Synaptic glutamate receptors are switched to be calcium-impermeable. Adhesion molecules (black lines) connect the two sides of the new synapse and form nanodomains, with ECM (#) protection.

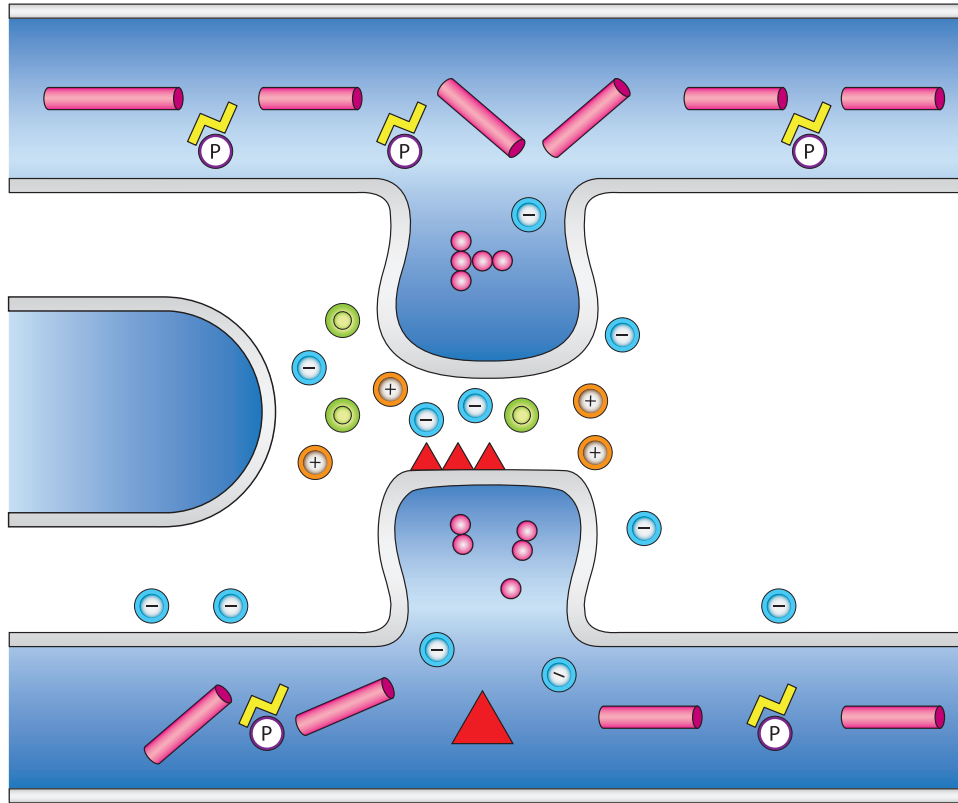


Figure 4: **Chronic plasticity and impaired CRES in AD.** In AD, cholesterol is not incorporated sufficiently in plasma membrane lipid rafts (e.g., due to reduced transport by ApoE4). As a result, synapse formation is not completed, manifesting as anterograde amnesia. LR deficiency impairs the switch from Cgen to CRES, and induces chronicity of their agents. Chronicity is biased towards CRES functionality due to the double-edged plasticity (DEP) principle. This yields hyper p-tau, neurite retraction, cytoskeleton collapse, and eventually cell death, which manifest as retrograde amnesia. Chronic cholesterol induces Abeta plaques, Abeta forms toxic cation pores. (Intracellular cholesterol, endosome issues are not shown.)